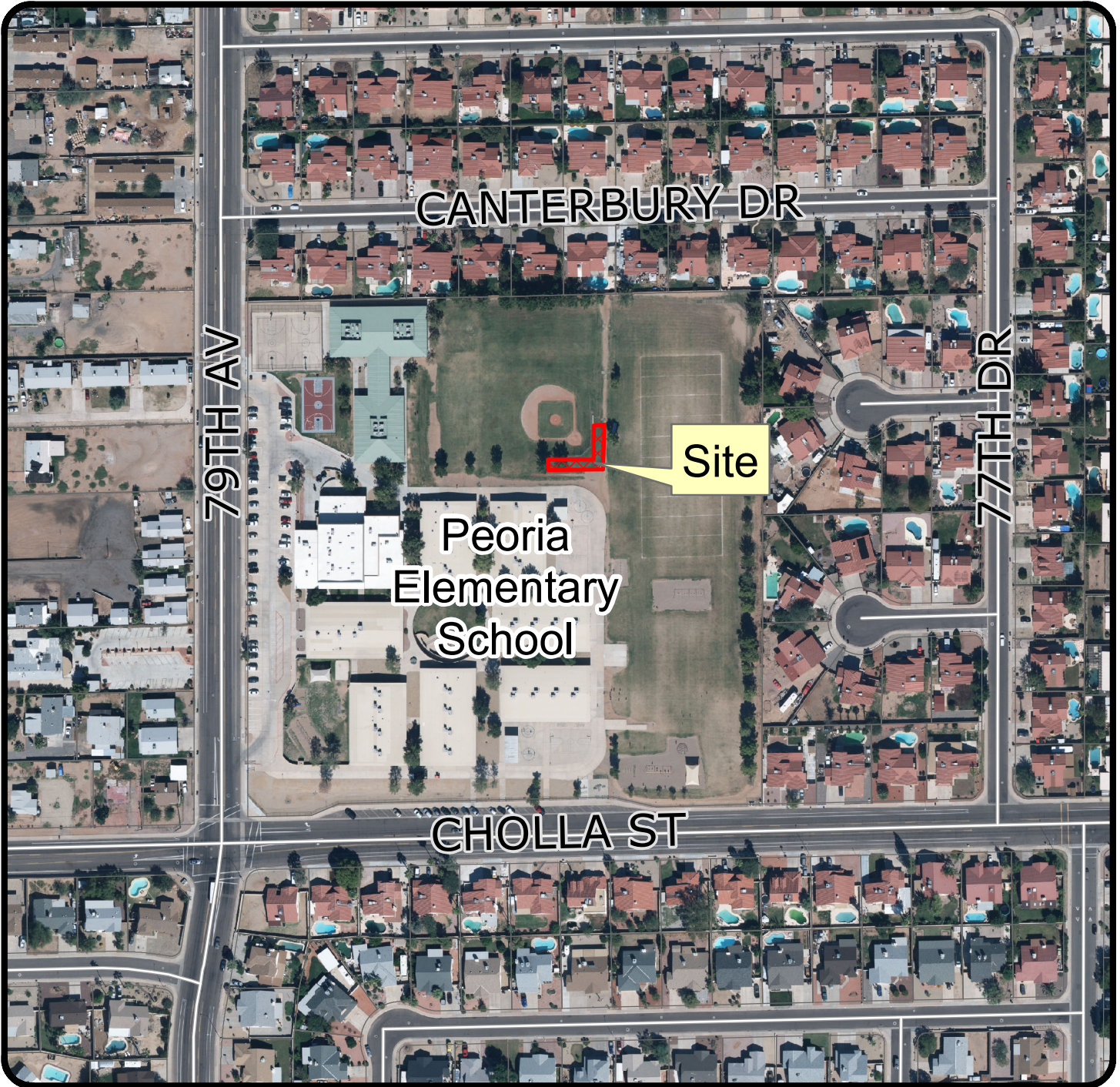


## Vicinity Map



### CU16-0022 PHO Shangri-La

Applicant: Shaw & Associates

Request: A Conditional Use Permit to allow a sixty-five (65) foot tall monopine and associated ground equipment on the Peoria Elementary School site adjacent to the baseball field.

Location: Northeast of the northeast corner of 79th Avenue and Cholla Street.

### Exhibit 1



Not to Scale