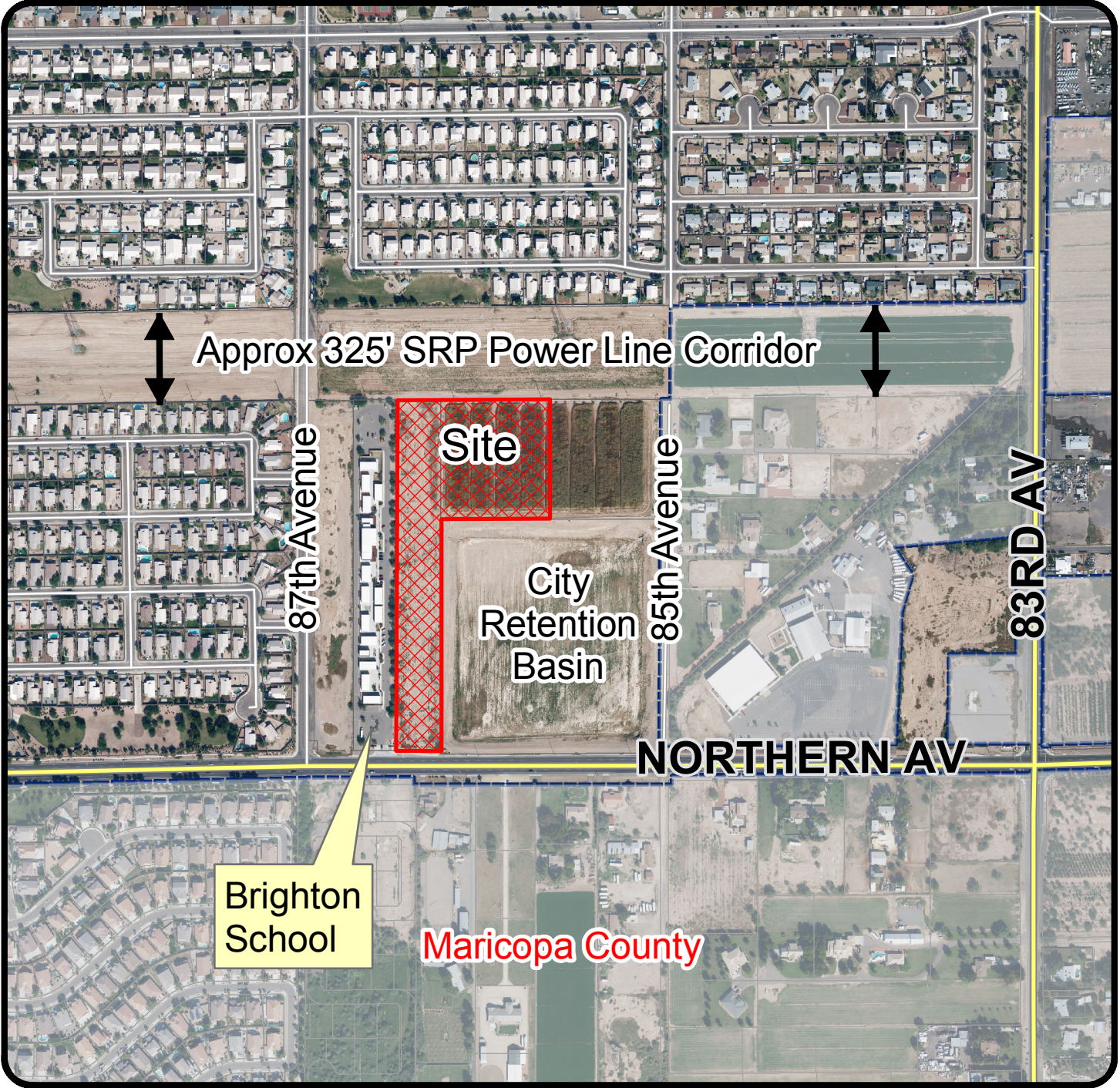


Vicinity Map



GPA16-0003 Assured Self Storage

Applicant: VLC Enterprises LLC

Request: General Plan Amendment for approximately 7.5 acres from Low Density Residential (2-5 du/ac, target of 3) to Neighborhood Commercial.

Location: Northwest of the northwest corner of 85th Avenue and Northern Avenue.



Not to Scale