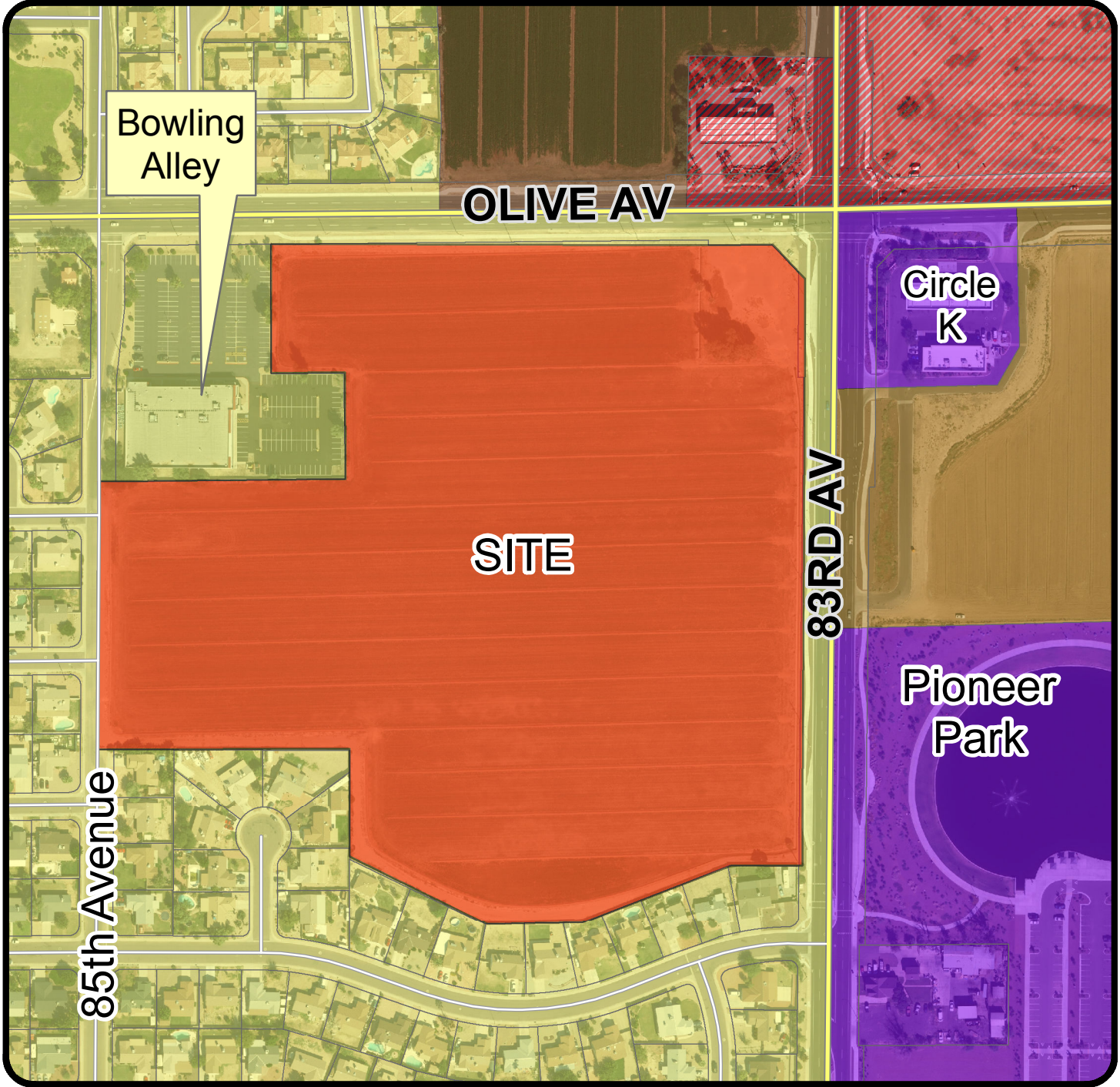


# Proposed Land Use Map



## Z16-0011 Olive Crossroads

Applicant: Empire Residential Communities Fund III LLC

Request: Rezone approximately 27.5 acres from Intermediate Commercial (C-2) and Multi-Family Residential (RM-1) to Olive Crossroads Planned Area Development.

Location: Southwest corner of 83rd Ave. & Olive Ave.

### Legend

- Business Park/Industrial
- Mixed Use
- Community Commercial
- High Density Res.
- Low Density Res.
- Med/High Density Res.
- Community Commercial
- Commercial



Not to Scale