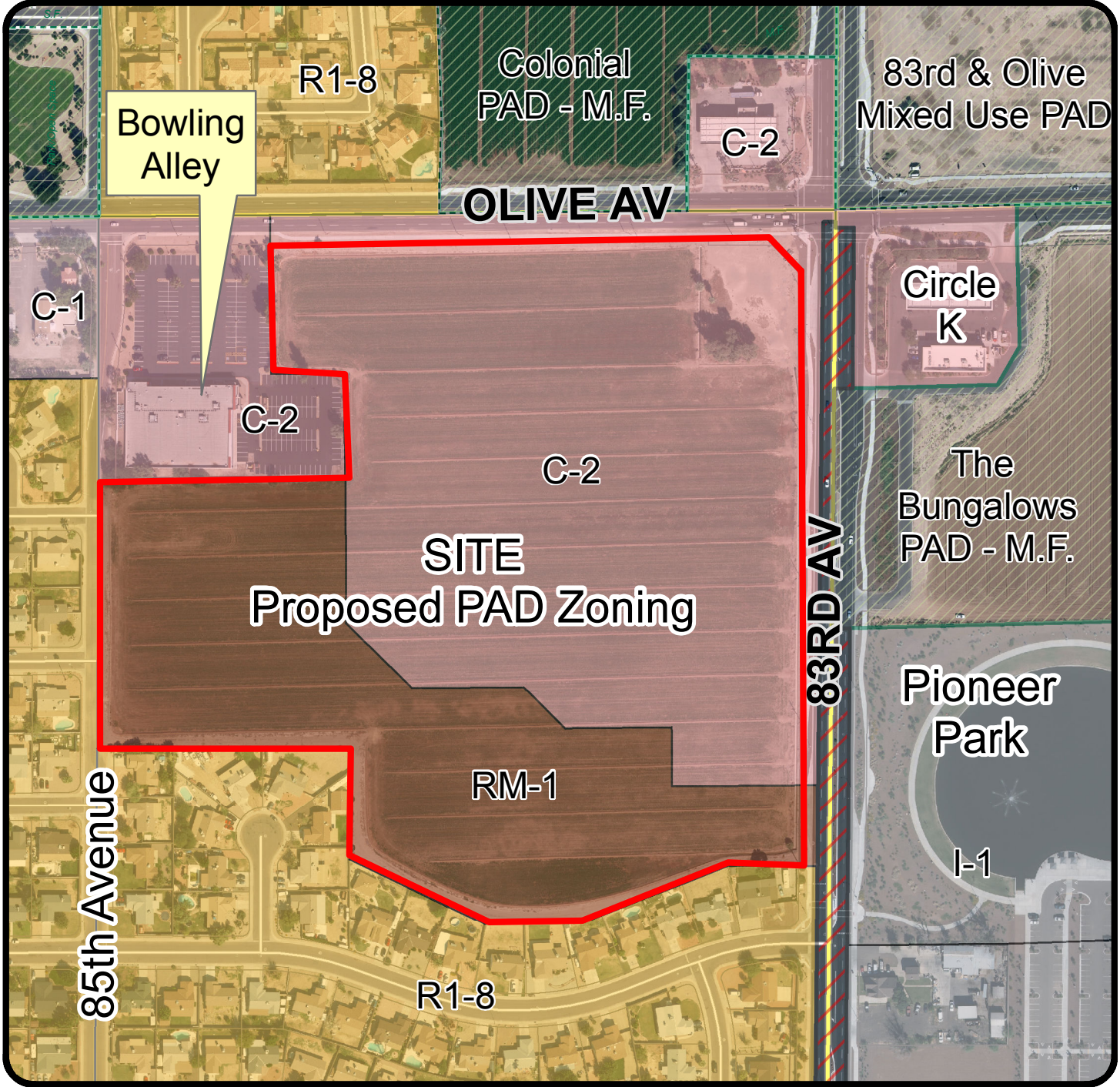


Zoning Map



Z16-0011 Olive Crossroads

Applicant: Empire Residential Communities Fund III LLC

Request: Rezone approximately 27.5 acres from Intermediate Commercial (C-2) and Multi-Family Residential (RM-1) to Olive Crossroads Planned Area Development.

Location: Southwest corner of 83rd Ave. & Olive Ave.



Not to Scale