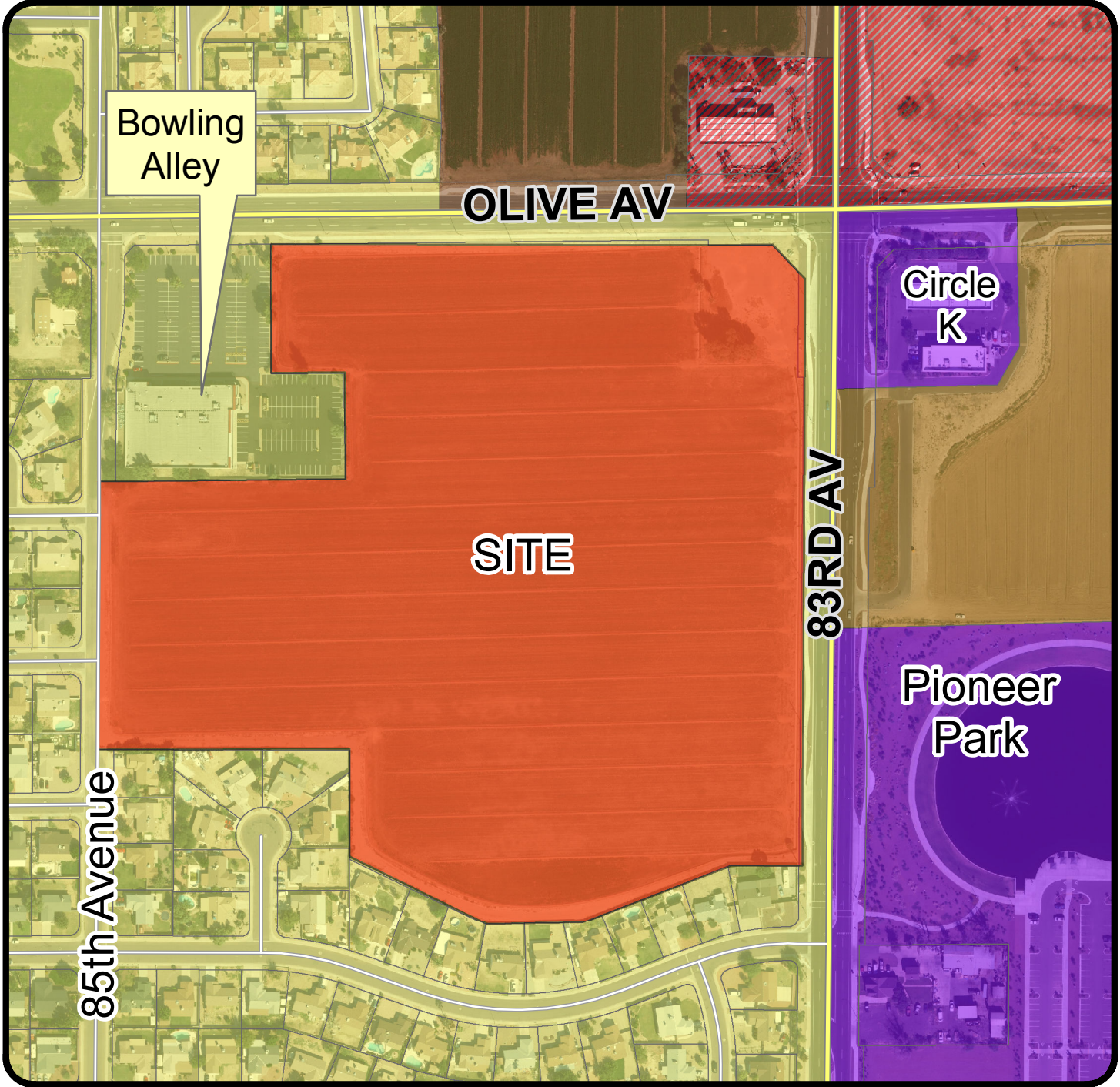


Proposed Land Use Map



GPA16-0004 Olive Crossroads

Applicant: Empire Residential Communities Fund III LLC

Request: General Plan Amendment for approximately 27.5 acres changing the land use designation from Low Density Residential (2-5 du/ac, target of 3 du/ac) to Community Commercial.

Location: Southwest corner of 83rd Ave and Olive Ave.

Legend

- Business Park/Industrial
- Mixed Use
- Community Commercial
- High Density Res.
- Low Density Res.
- Med/High Density Res.
- Community Commercial
- Commercial



Not to Scale