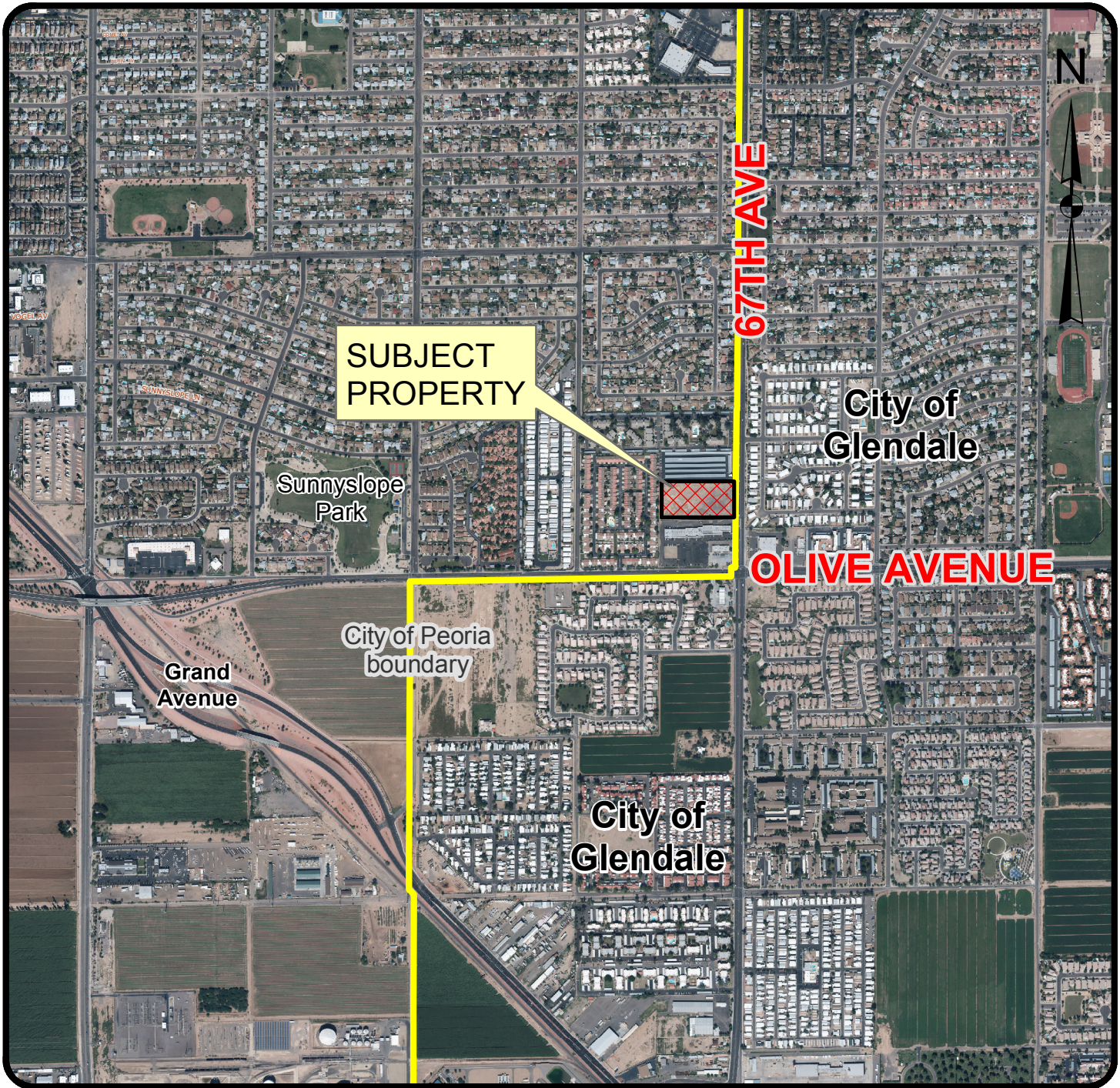


Vicinity Map



Z16-0010: Landmark on 67th Rezoning

Exhibit A

Applicant: Greg Zimmerman Architect

Request: to change the zoning of 4.55 acres from Intermediate Commercial (C-2) to Multi-Family Residential (RM-1) to allow for a 2-story multi-family development, consisting of 56/2-bedroom units.

Location: North of the northwest corner of 67th and Olive Avenues.



Not to Scale