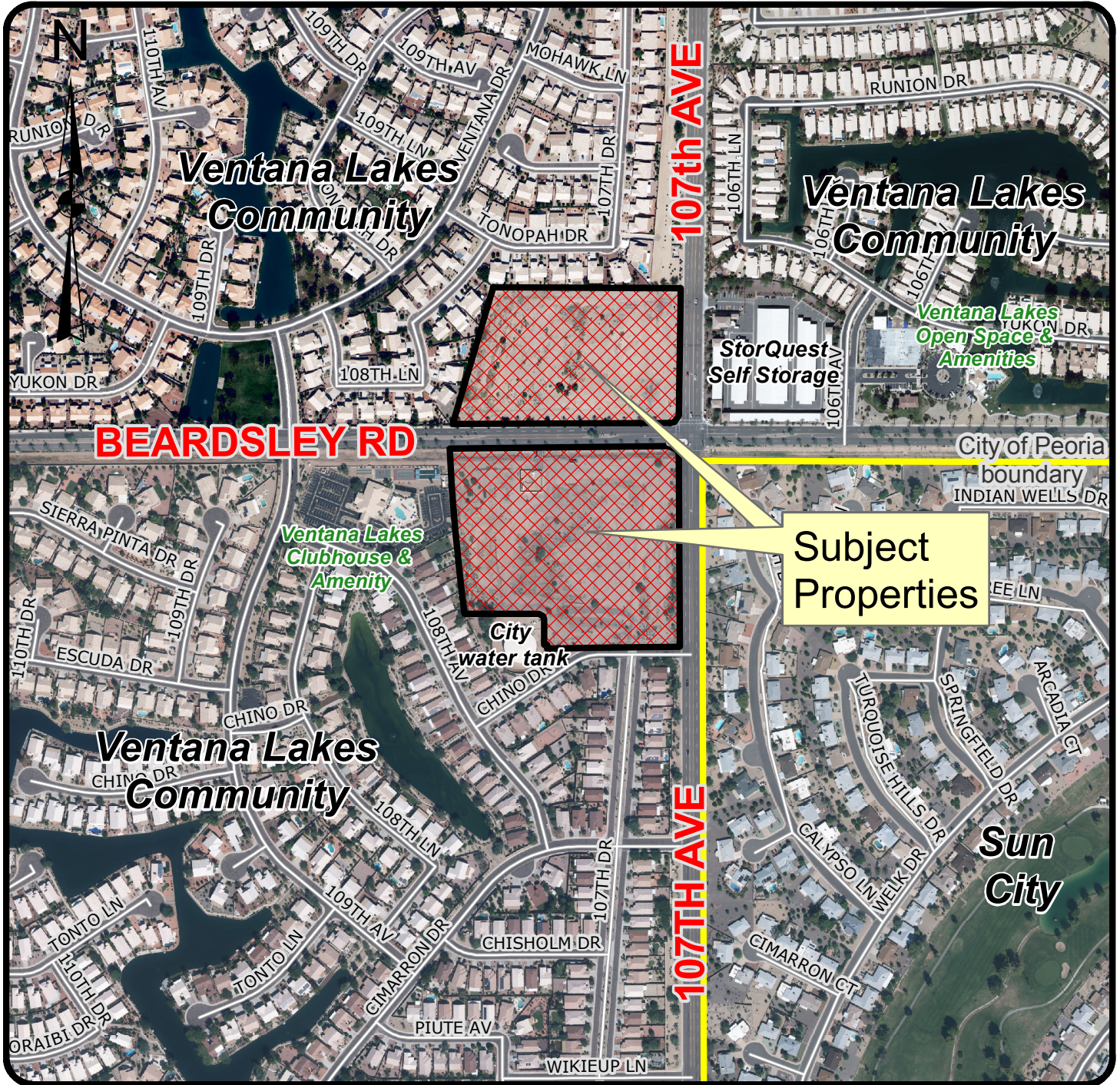


Exhibit 1

Aerial Vicinity Map

Aerial Map



Z17-01: Four Seasons at Ventana Lakes Rezoning

Exhibit 1

Applicant: CVL Consultants Inc.

Request: to rezone 17.3 acres from Intermediate Commercial (C-2) to the Four Seasons at Ventana Lakes Planned Area Development (PAD), to permit a single-family, age restricted subdivision development.

Location: NW & SW corners of 107th Avenue and Beardsley Road.



Not to Scale