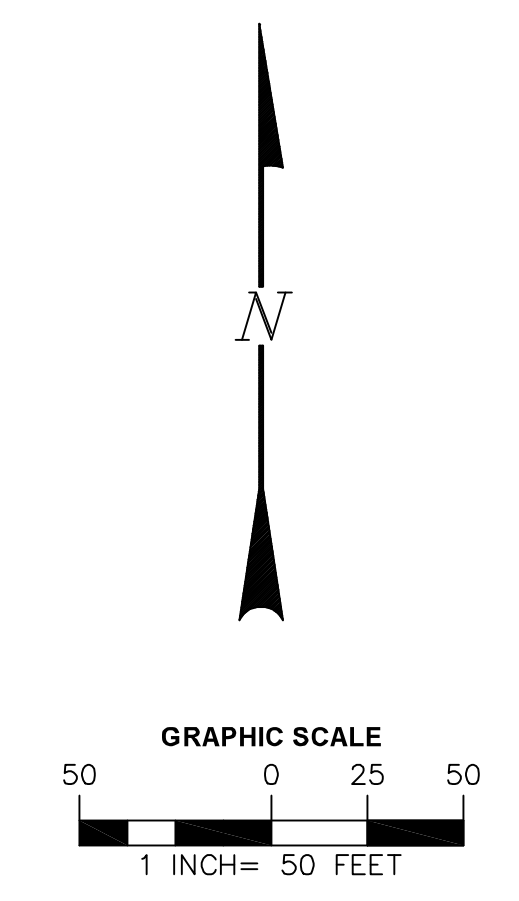


**LINE & CURVE TABLES**

SEE SHEET 3

**LEGEND**

- MCR MARICOPA COUNTY RECORDS
  - APN ASSESSOR PARCEL NUMBER
  - R/W RIGHT-OF-WAY
  - COC CERTIFICATE OF CORRECTION
  - PUE PUBLIC UTILITY EASEMENT
  - WL# WATERLINE EASEMENT (LINE ANNOTATION)
  - WC# WATERLINE EASEMENT (CURVE ANNOTATION)
  - DL# DRAINAGE EASEMENT (LINE ANNOTATION)
  - DC# DRAINAGE EASEMENT (CURVE ANNOTATION)
  - SL# SEWER EASEMENT (LINE ANNOTATION)
  - PL# PEDESTRIAN ACCESS EASEMENT (LINE ANNOTATION)
  - PC# PEDESTRIAN ACCESS EASEMENT (CURVE ANNOTATION)
- 
- PROPERTY LINE
  - ADJOINER LINE
  - CENTER LINE
  - PROPERTY CORNER  
SET PK NAIL W/TAG  
"AWLS 45377"  
UNLESS OTHERWISE NOTED
  - FOUND BRASS CAP FLUSH  
UNLESS OTHERWISE NOTED



SHEET 2  
SHEET 3

SHEET 2  
SHEET 3

APN: 142-16-005  
OWNER: OLIVE PARTNERS LLC



**A REPLAT OF LOTS 4 AND 5**  
"PEORIA PLACE"



ORIGINAL PLAN DATE 12-05-2022
LATEST REVISION DATE 05-30-2023
JOB NUMBER 22-152
SHEET NUMBER 2 OF 4

R230004

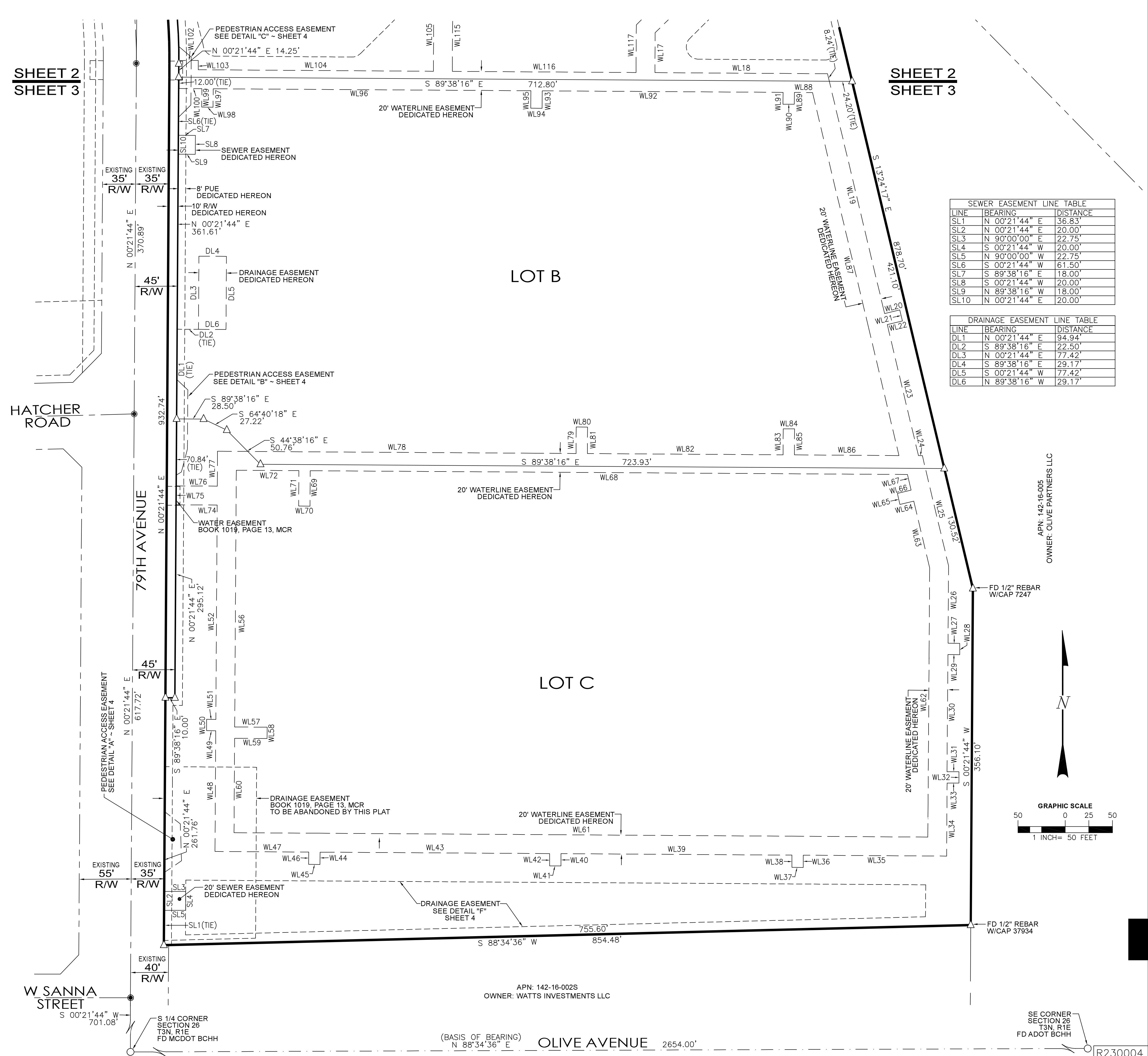
LINE	BEARING	DISTANCE
WL1	S 45°41'42" W	9.50'
WL2	S 44°39'08" E	352.43'
WL3	N 45°20'52" E	13.00'
WL4	S 44°39'08" E	12.00'
WL5	S 45°20'52" W	13.00'
WL6	S 44°39'08" E	233.50'
WL7	N 45°20'52" E	13.00'
WL8	S 44°39'08" E	12.00'
WL9	S 45°20'30" W	13.00'
WL10	S 44°39'08" E	30.34'
WL11	N 13°24'17" E	76.51'
WL12	S 45°20'52" W	93.31'
WL13	S 44°38'37" E	13.50'
WL14	S 45°21'23" W	12.00'
WL15	N 44°38'37" W	13.50'
WL16	S 45°20'52" W	95.74'
WL17	S 00°21'44" W	42.21'
WL18	S 89°38'16" E	182.68'
WL19	S 13°24'17" E	260.91'
WL20	N 76°35'43" E	16.50'
WL21	S 13°24'17" E	12.00'
WL22	S 76°35'43" W	16.50'
WL23	S 13°24'17" E	142.52'
WL24	S 89°38'16" E	4.12'
WL25	S 13°24'17" E	119.67'
WL26	S 00°22'54" W	82.01'
WL27	S 89°38'16" E	12.43'
WL28	S 00°21'44" W	12.00'
WL29	N 89°38'16" W	12.43'
WL30	S 00°29'12" W	123.90'
WL31	S 89°38'16" E	12.70'
WL32	S 00°21'44" W	12.00'
WL33	N 89°38'16" W	12.50'
WL34	S 00°21'44" W	77.35'
WL35	N 89°38'16" W	151.75'
WL36	S 00°21'44" W	13.00'
WL37	N 89°38'16" W	12.00'
WL38	N 00°21'44" E	13.00'
WL39	N 89°38'16" W	244.50'
WL40	S 00°21'44" W	13.00'
WL41	N 89°38'16" W	12.00'
WL42	N 00°21'44" E	13.00'
WL43	N 89°38'16" W	243.00'
WL44	S 00°21'44" W	13.00'
WL45	N 89°38'16" W	12.00'
WL46	N 00°21'44" E	13.00'
WL47	N 89°38'16" W	99.25'
WL48	N 00°21'44" E	127.75'
WL49	N 89°38'16" W	9.70'
WL50	N 00°21'44" E	12.00'
WL51	S 89°38'16" E	9.70'
WL52	N 00°21'44" E	226.85'
WL53	INTENTIONALLY DELETED	
WL54	INTENTIONALLY DELETED	
WL55	INTENTIONALLY DELETED	
WL56	S 00°21'44" W	271.62'
WL57	S 89°38'16" E	34.41'
WL58	S 00°21'44" W	12.00'
WL59	N 89°38'16" W	34.41'
WL60	S 00°21'44" W	99.87'
WL61	S 89°38'16" E	734.50'
WL62	N 00°22'54" E	284.85'

LINE	BEARING	DISTANCE
WL63	N 13°24'17" W	72.55'
WL64	S 76°35'43" W	15.00'
WL65	N 13°24'17" W	12.00'
WL66	N 76°35'43" E	15.00'
WL67	N 13°24'17" W	17.02'
WL68	N 89°38'16" W	632.22'
WL69	S 00°21'44" W	37.50'
WL70	N 89°38'16" W	12.00'
WL71	N 00°21'44" E	37.50'
WL72	N 89°38'16" W	66.21'
WL73	INTENTIONALLY DELETED	
WL74	N 89°42'22" W	43.50'
WL75	N 00°21'44" E	20.00'
WL76	S 89°42'22" E	43.50'
WL77	N 00°21'44" E	36.90'
WL78	S 89°38'16" E	379.50'
WL79	N 00°21'44" E	28.04'
WL80	S 89°38'16" E	12.00'
WL81	S 00°21'44" W	28.04'
WL82	S 89°38'16" E	207.17'
WL83	N 00°21'44" E	27.50'
WL84	S 89°38'16" E	12.00'
WL85	S 00°21'44" W	27.50'
WL86	S 89°38'16" E	110.74'
WL87	N 13°24'17" W	394.84'
WL88	N 89°38'16" W	19.20'
WL89	S 00°21'44" W	12.50'
WL90	N 89°38'16" W	12.00'
WL91	N 00°21'44" E	12.50'
WL92	N 89°38'16" W	255.01'
WL93	S 00°21'44" W	18.50'
WL94	N 89°38'16" W	12.00'
WL95	N 00°21'44" E	18.50'
WL96	N 89°38'16" W	336.24'
WL97	S 00°21'44" W	19.50'
WL98	N 89°38'16" W	12.00'
WL99	N 00°21'44" E	19.50'
WL100	N 89°38'16" W	24.50'
WL101	N 00°21'44" E	29.61'
WL102	N 89°35'40" E	20.51'
WL103	S 00°21'44" W	9.89'
WL104	S 89°38'16" E	248.95'
WL105	N 00°21'44" E	85.37'
WL106	N 44°39'08" W	246.62'
WL107	INTENTIONALLY DELETED	
WL108	INTENTIONALLY DELETED	
WL109	INTENTIONALLY DELETED	
WL110	INTENTIONALLY DELETED	
WL111	N 45°20'52" E	56.50'
WL112	S 44°39'08" E	20.00'
WL113	S 45°20'52" W	36.50'
WL114	S 44°39'08" E	234.91'
WL115	S 00°21'44" W	93.66'
WL116	S 89°38'16" E	194.52'
WL117	N 00°21'44" E	43.49'
WL118	N 45°20'52" E	198.08'
WL119	N 13°24'17" W	59.66'
WL120	N 44°39'08" W	531.99'
WL121	S 45°20'52" W	12.50'
WL122	N 44°39'08" W	12.00'
WL123	N 45°20'52" E	12.50'
WL124	N 44°39'08" W	90.80'
WL125	N 45°41'42" E	20.00'

CURVE	RADIUS	ARC LENGTH	DELTA ANGLE	CHORD BEARING	CHORD LENGTH
C1	600.00'	427.72'	40°50'40"	N 20°03'36" W	418.72'
C2	635.00'	399.85'	36°04'42"	N 17°40'37" W	393.28'
C3	645.00'	397.65'	35°19'25"	N 17°17'59" W	391.38'

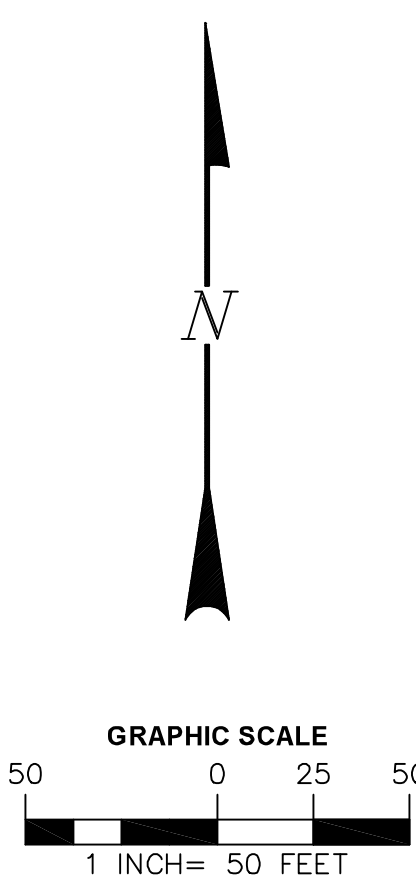
**LEGEND**

- MCR MARICOPA COUNTY RECORDS
- APN ASSESSOR PARCEL NUMBER
- R/W RIGHT-OF-WAY
- COC CERTIFICATE OF CORRECTION
- PUE PUBLIC UTILITY EASEMENT
- WL# WATERLINE EASEMENT (LINE ANNOTATION)
- WC# WATERLINE EASEMENT (CURVE ANNOTATION)
- DL# DRAINAGE EASEMENT (LINE ANNOTATION)
- DC# DRAINAGE EASEMENT (CURVE ANNOTATION)
- SL# SEWER EASEMENT (LINE ANNOTATION)
- PL# PEDESTRIAN ACCESS EASEMENT (LINE ANNOTATION)
- PC# PEDESTRIAN ACCESS EASEMENT (CURVE ANNOTATION)
- PROPERTY LINE
- ADJOINER LINE
- CENTER LINE
- PROPERTY CORNER SET PK NAIL W/TAG "AWLS 4537" UNLESS OTHERWISE NOTED
- FOUND BRASS CAP FLUSH UNLESS OTHERWISE NOTED



LINE	BEARING	DISTANCE
SL1	N 00°21'44" E	36.83'
SL2	N 00°21'44" E	20.00'
SL3	N 90°00'00" W	22.75'
SL4	S 00°21'44" W	20.00'
SL5	N 90°00'00" W	22.75'
SL6	S 00°21'44" W	61.50'
SL7	S 89°38'16" E	18.00'
SL8	S 00°21'44" W	20.00'
SL9	N 89°38'16" W	18.00'
SL10	N 00°21'44" E	20.00'

LINE	BEARING	DISTANCE
DL1	N 00°21'44" E	94.94'
DL2	S 89°38'16" E	22.50'
DL3	N 00°21'44" E	77.42'
DL4	S 89°38'16" E	29.17'
DL5	S 00°21'44" W	77.42'
DL6	N 89°38'16" W	29.17'



AW LAND SURVEYING, LLC

P.O. BOX 2170, CHANDLER, AZ 85244

(480) 244-7630, EMAIL: DARMIL@AWLANDSURVEY.COM

REGISTERED LAND SURVEYOR

4537 DANIEL D. ADAMS

A REPLAT OF LOTS 4 AND 5

"PEORIA PLACE"

ORIGINAL PLAN DATE: 12-05-2022

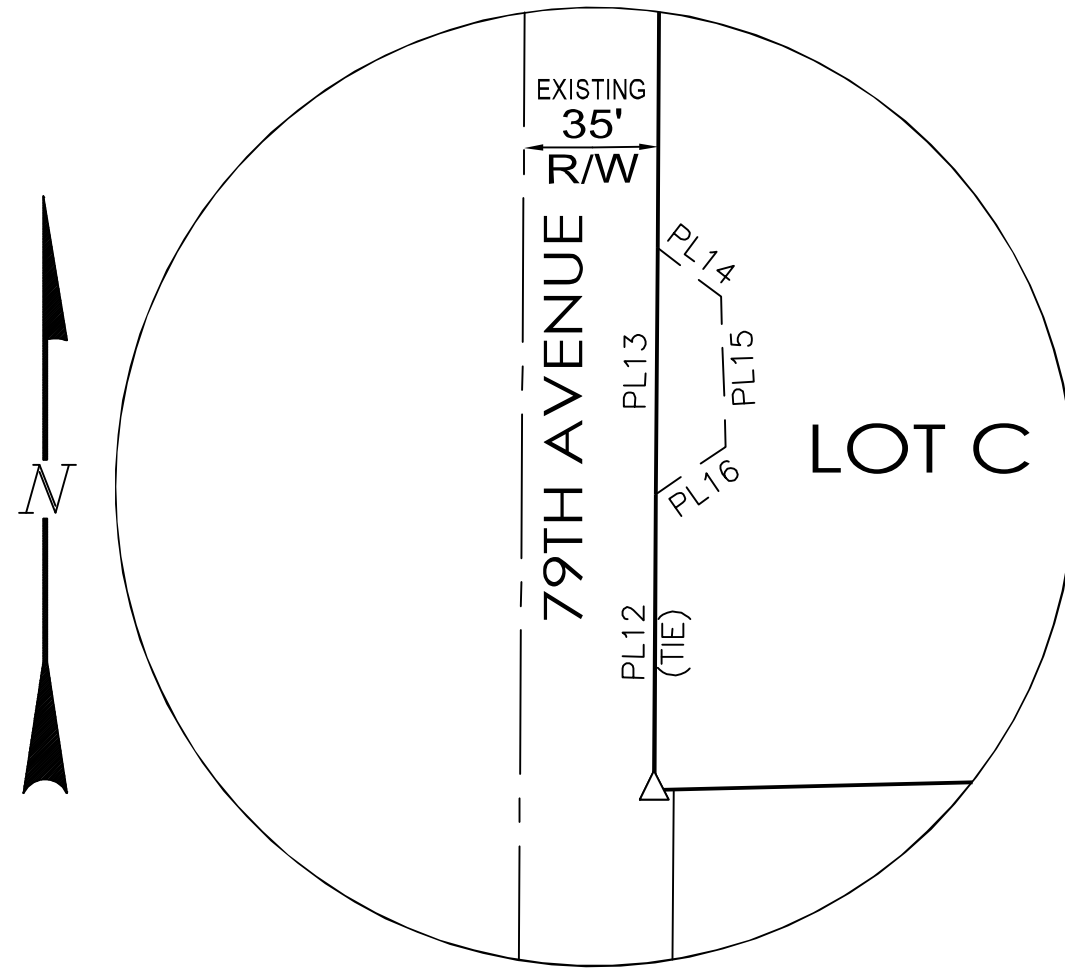
LATEST REVISION DATE: 05-10-2023

JOB NUMBER: 22-152

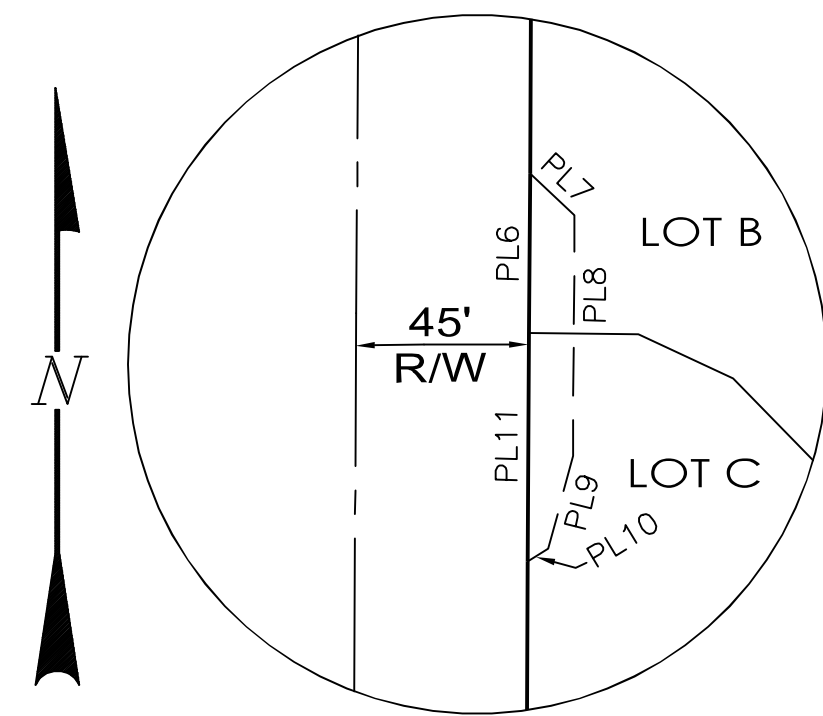
SHEET NUMBER: 3 OF 4

REVISIONS:

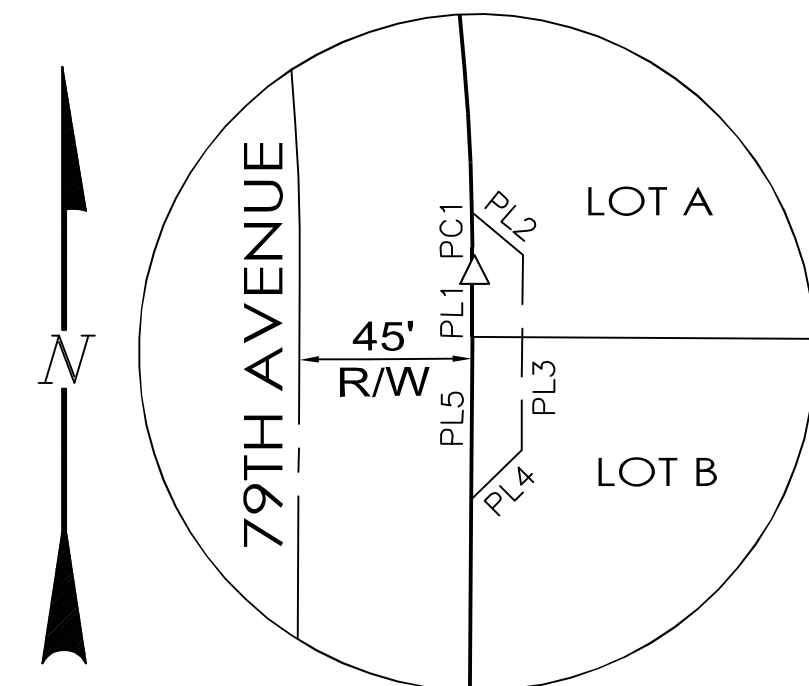
NO.	DATE	DESCRIPTION



PEDESTRIAN ACCESS EASEMENT  
**DETAIL "A"**  
1" = 50'



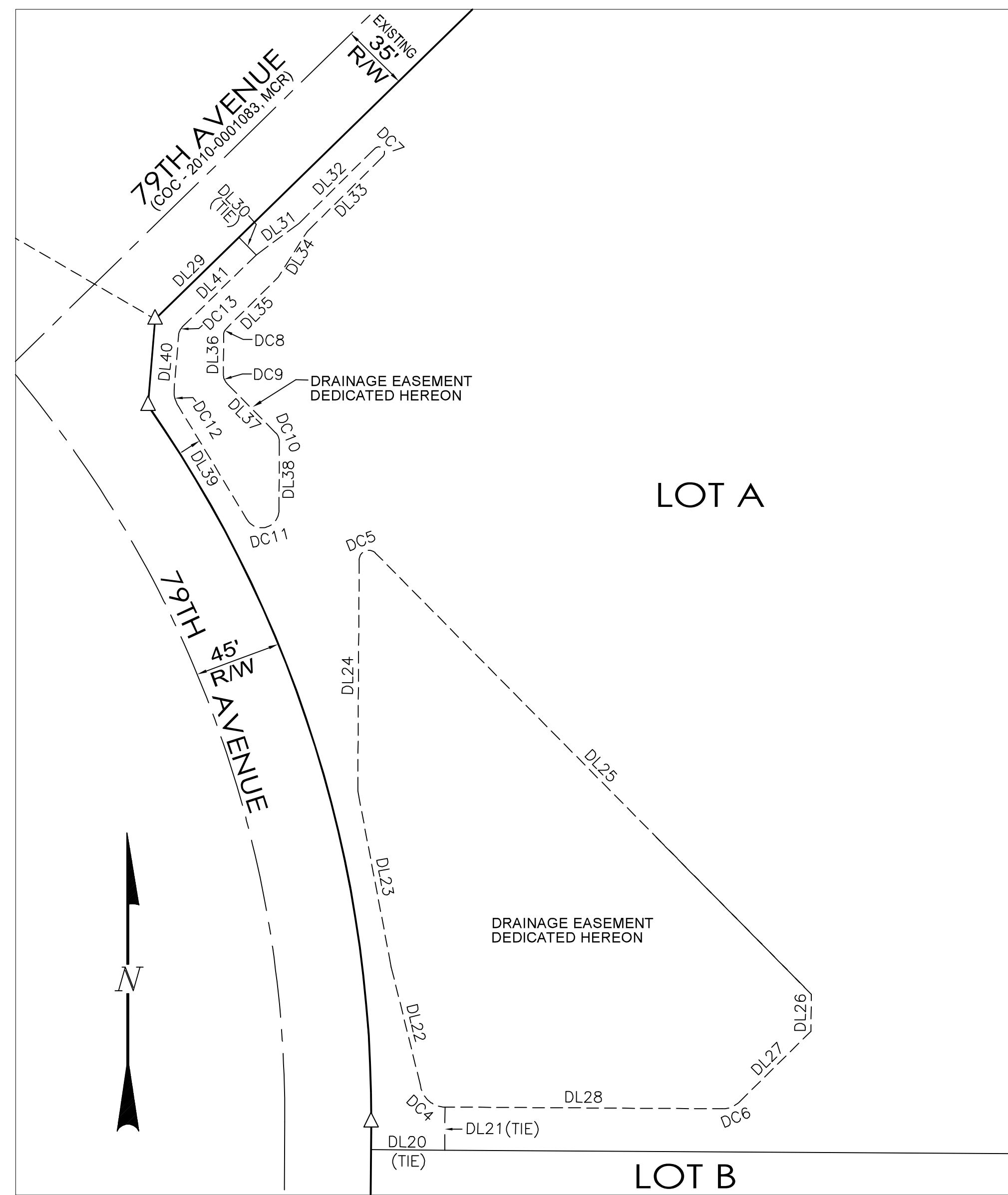
PEDESTRIAN ACCESS EASEMENT  
**DETAIL "B"**  
1" = 50'



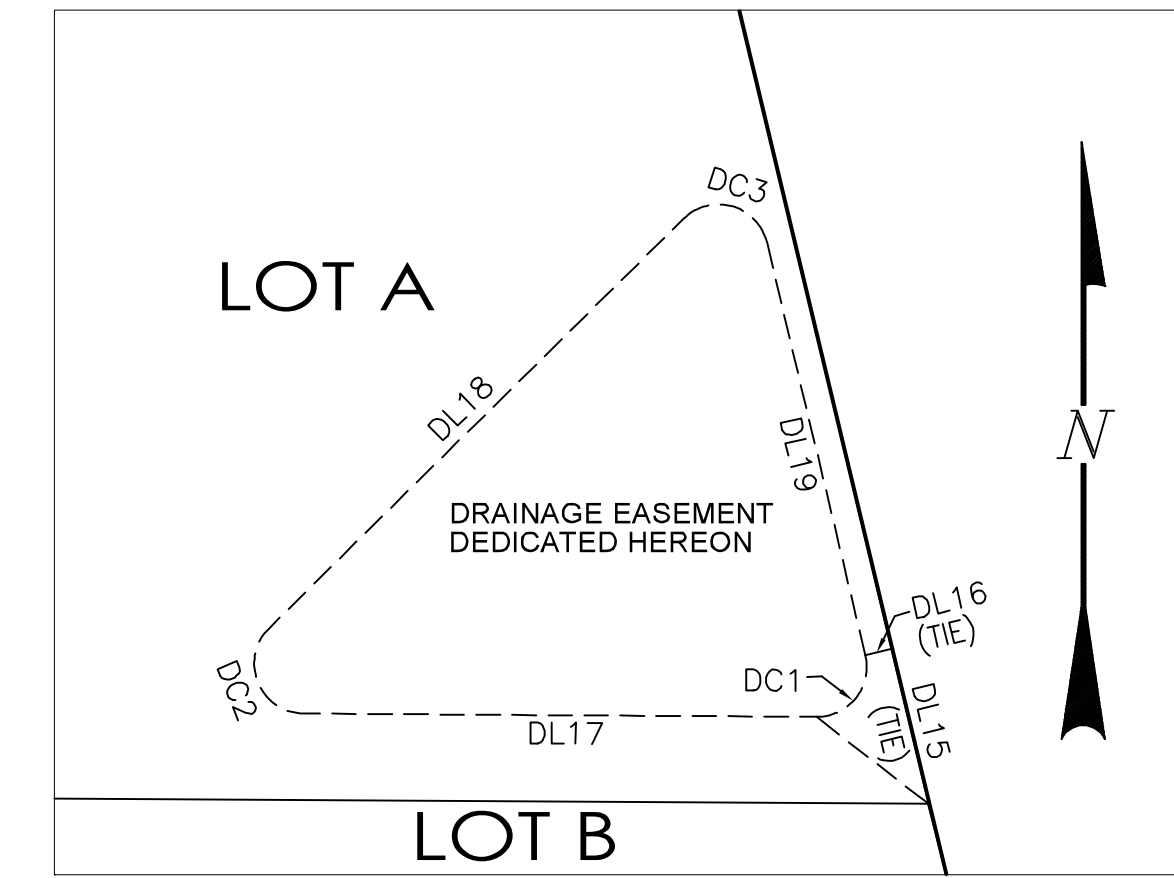
PEDESTRIAN ACCESS EASEMENT  
**DETAIL "C"**  
1" = 50'

CURVE	RADIUS	ARC LENGTH	DELTA ANGLE	CHORD BEARING	CHORD LENGTH
PC1	645.00'	18.31'	1°37'35"	N 00°27'04" W	18.31'

LINE	BEARING	DISTANCE
PL1	N 00°21'44" E	14.25'
PL2	S 49°44'00" E	17.29'
PL3	S 00°21'44" W	50.82'
PL4	S 45°33'43" W	18.32'
PL5	N 00°21'44" E	42.26'
PL6	N 00°21'44" E	41.64'
PL7	S 46°33'53" E	15.91'
PL8	S 00°21'44" W	62.67'
PL9	S 14°52'57" W	24.95'
PL10	S 58°13'35" W	6.34'
PL11	N 00°21'44" E	59.43'
PL12	N 00°21'44" E	77.01'
PL13	N 00°21'44" E	64.14'
PL14	S 52°19'25" E	20.85'
PL15	S 01°50'16" E	39.07'
PL16	S 55°46'56" W	21.97'



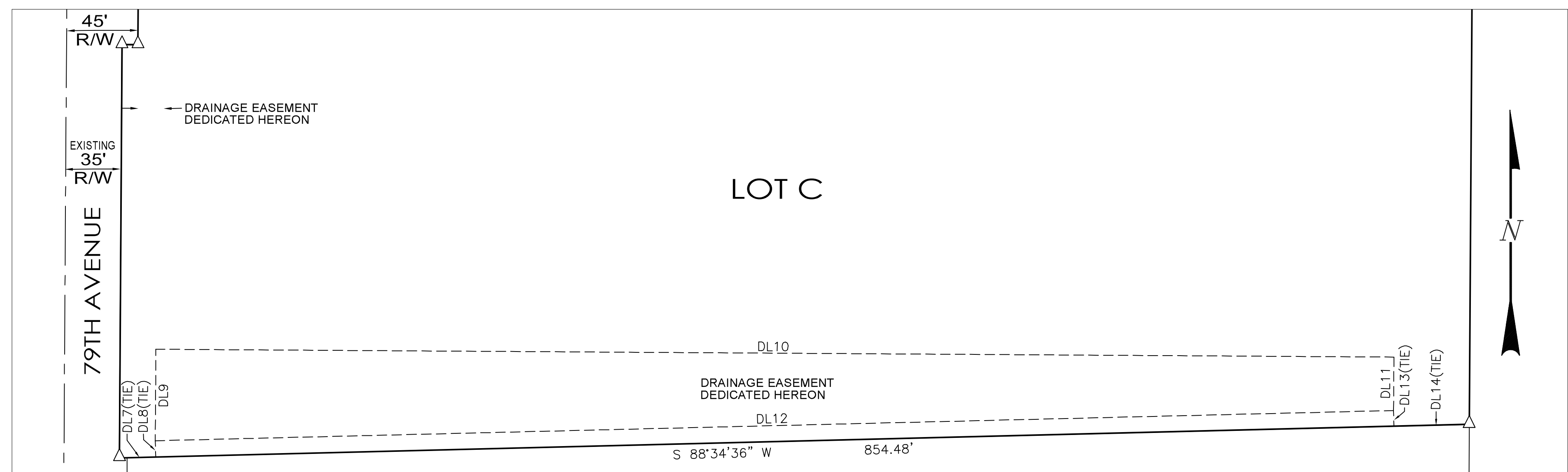
DRAINAGE EASEMENT  
**DETAIL "D"**  
1" = 50'



DRAINAGE EASEMENT  
**DETAIL "E"**  
1" = 50'

LINE	BEARING	DISTANCE
DL7	N 88°34'36" E	23.08'
DL8	N 01°25'24" W	10.33'
DL9	N 00°21'44" E	57.95'
DL10	S 89°38'16" E	783.29'
DL11	S 00°21'44" W	33.86'
DL12	S 88°36'03" W	783.66'
DL13	S 01°25'24" E	10.00'
DL14	N 88°34'36" E	47.74'
DL15	N 13°24'17" W	41.45'
DL16	S 76°35'43" W	7.00'
DL17	N 89°38'16" W	133.45'
DL18	N 45°20'52" E	151.61'
DL19	S 13°24'17" E	110.40'
DL20	S 89°38'16" E	38.50'
DL21	N 00°21'44" E	22.50'
DL22	N 13°57'46" W	62.77'
DL23	N 10°44'49" W	93.59'
DL24	N 00°21'44" E	120.47'
DL25	S 44°39'08" E	323.24'
DL26	S 00°30'15" W	19.32'
DL27	S 45°20'52" W	52.15'
DL28	N 89°38'16" W	144.54'
DL29	N 45°41'42" E	61.14'
DL30	S 44°18'18" E	13.00'
DL31	N 53°36'54" E	27.80'
DL32	N 45°19'36" E	55.43'
DL33	S 45°19'36" W	55.38'
DL34	S 32°22'33" W	28.28'
DL35	S 45°20'52" W	37.97'
DL36	S 00°20'52" W	20.37'
DL37	S 44°39'08" E	35.81'
DL38	S 00°21'44" W	35.67'
DL39	N 31°09'45" W	68.68'
DL40	N 04°42'02" E	28.54'
DL41	N 45°41'42" E	53.66'

CURVE	RADIUS	ARC LENGTH	DELTA ANGLE	CHORD BEARING	CHORD LENGTH
DC1	13.00'	23.54'	103°46'01"	N 38°28'43" E	20.46'
DC2	13.00'	30.63'	134°59'08"	S 22°08'42" E	24.02'
DC3	13.00'	27.51'	121°14'51"	N 74°01'43" W	22.66'
DC4	13.00'	19.28'	84°58'25"	S 47°09'03" E	17.56'
DC5	5.00'	11.78'	134°59'08"	N 67°51'18" E	9.24'
DC6	13.00'	10.21'	45°00'52"	N 67°51'18" E	9.95'
DC7	3.00'	9.42'	180°00'00"	S 44°40'24" E	6.00'
DC8	5.00'	3.93'	45°00'00"	S 22°50'52" W	3.83'
DC9	7.00'	5.50'	45°00'00"	N 22°09'08" W	5.36'
DC10	7.00'	5.50'	45°00'52"	S 22°08'42" E	5.36'
DC11	9.00'	23.79'	151°28'00"	S 76°05'44" W	17.44'
DC12	13.00'	8.82'	38°51'16"	N 14°43'36" W	8.65'
DC13	7.00'	5.01'	40°59'40"	S 25°11'52" W	4.90'



DRAINAGE EASEMENT  
**DETAIL "F"**  
1" = 50'