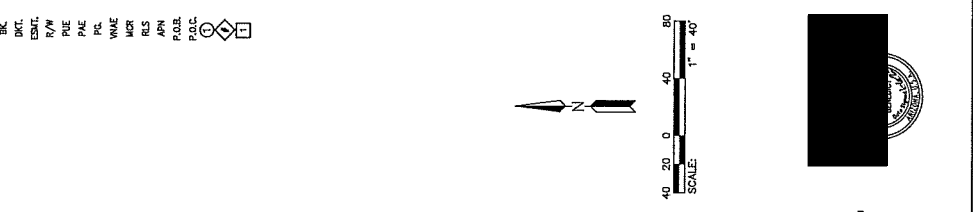
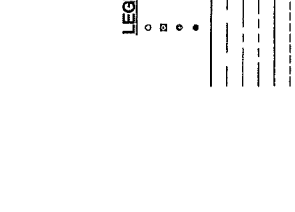


LEGEND

- FOUND MONUMENT AS NOTED
- FOUND BRASS CAP IN HAND HOLE
- FOUND BRASS CAP FLUSH
- SET 1/2" REBAR W/ CAP, ILS 32222 OR AS NOTED
- BOUNDARY LINE
- SECTION LINE
- CENTER LINE
- RIGHT OF WAY
- PARCEL LINE
- EASEMENT LINE
- BOOK
- EASEMENT
- DOTTED
- RIGHT-OF-WAY
- PUBLIC UTILITY EASEMENT
- PEDESTRIAN ACCESS EASEMENT
- PAGE
- VEHICLE NON-ACCESS EASEMENT
- MARICOPA COUNTY RECORDS
- REGISTERED LAND SURVEYOR
- ASSessor PARCEL NUMBER
- APN
- POINT OF BEGINNING
- POLY
- POINT OF COMMENCEMENT
- SHORT VESIBILITY THRUWAY EASEMENT (07/2007)
- WATER EASEMENT DETAIL
- DEDICATED R/W PER ILS
- PA
- MCR

LINE NO.	DIRECTION	LENGTH
L20	N43°27'27"E	21.27'
L21	N46°27'39"W	21.21'
L22	S14°02'17"E	21.05'
L23	S11°35'39"E	60.73'
L24	N42°22'39"E	20.79'
L25	S24°54'17"E	20.22'
L27	N43°22'27"E	21.22'
L28	S46°27'39"E	21.21'

CURVE NO.	RADIUS	DELTA	LENGTH
C13	36.00'	187°48'	12.12'
C14	36.00'	187°48'	12.12'
C15	36.00'	79°30'00"	30.00'
C16	36.00'	87°01'00"	30.00'



TRACT A
 SHEILA HOMES LIMITED PARTNERSHIP
 DOC. 2022-0301478
 APN: 142-23-0095
 MCR

TRACT D
 SHEILA HOMES LIMITED PARTNERSHIP
 DOC. 2022-0301478
 APN: 142-23-0095
 MCR

TRACT E
 SHEILA HOMES LIMITED PARTNERSHIP
 DOC. 2022-0301478
 APN: 142-23-0095
 MCR

TRACT F
 SHEILA HOMES LIMITED PARTNERSHIP
 DOC. 2022-0301478
 APN: 142-23-0095
 MCR

TRACT B
 SHEILA HOMES LIMITED PARTNERSHIP
 DOC. 2022-0301478
 APN: 142-23-0095
 MCR

TRACT C
 SHEILA HOMES LIMITED PARTNERSHIP
 DOC. 2022-0301478
 APN: 142-23-0095
 MCR

TRACT D
 SHEILA HOMES LIMITED PARTNERSHIP
 DOC. 2022-0301478
 APN: 142-23-0095
 MCR

TRACT E
 SHEILA HOMES LIMITED PARTNERSHIP
 DOC. 2022-0301478
 APN: 142-23-0095
 MCR

TRACT F
 SHEILA HOMES LIMITED PARTNERSHIP
 DOC. 2022-0301478
 APN: 142-23-0095
 MCR

TRACT G
 SHEILA HOMES LIMITED PARTNERSHIP
 DOC. 2022-0301478
 APN: 142-23-0095
 MCR

TRACT H
 SHEILA HOMES LIMITED PARTNERSHIP
 DOC. 2022-0301478
 APN: 142-23-0095
 MCR

TRACT I
 SHEILA HOMES LIMITED PARTNERSHIP
 DOC. 2022-0301478
 APN: 142-23-0095
 MCR

TRACT J
 SHEILA HOMES LIMITED PARTNERSHIP
 DOC. 2022-0301478
 APN: 142-23-0095
 MCR

TRACT K
 SHEILA HOMES LIMITED PARTNERSHIP
 DOC. 2022-0301478
 APN: 142-23-0095
 MCR

TRACT L
 SHEILA HOMES LIMITED PARTNERSHIP
 DOC. 2022-0301478
 APN: 142-23-0095
 MCR

TRACT M
 SHEILA HOMES LIMITED PARTNERSHIP
 DOC. 2022-0301478
 APN: 142-23-0095
 MCR

TRACT N
 SHEILA HOMES LIMITED PARTNERSHIP
 DOC. 2022-0301478
 APN: 142-23-0095
 MCR

TRACT O
 SHEILA HOMES LIMITED PARTNERSHIP
 DOC. 2022-0301478
 APN: 142-23-0095
 MCR

TRACT P
 SHEILA HOMES LIMITED PARTNERSHIP
 DOC. 2022-0301478
 APN: 142-23-0095
 MCR

TRACT Q
 SHEILA HOMES LIMITED PARTNERSHIP
 DOC. 2022-0301478
 APN: 142-23-0095
 MCR

TRACT R
 SHEILA HOMES LIMITED PARTNERSHIP
 DOC. 2022-0301478
 APN: 142-23-0095
 MCR

TRACT S
 SHEILA HOMES LIMITED PARTNERSHIP
 DOC. 2022-0301478
 APN: 142-23-0095
 MCR

TRACT T
 SHEILA HOMES LIMITED PARTNERSHIP
 DOC. 2022-0301478
 APN: 142-23-0095
 MCR

TRACT U
 SHEILA HOMES LIMITED PARTNERSHIP
 DOC. 2022-0301478
 APN: 142-23-0095
 MCR

TRACT V
 SHEILA HOMES LIMITED PARTNERSHIP
 DOC. 2022-0301478
 APN: 142-23-0095
 MCR

TRACT W
 SHEILA HOMES LIMITED PARTNERSHIP
 DOC. 2022-0301478
 APN: 142-23-0095
 MCR

TRACT X
 SHEILA HOMES LIMITED PARTNERSHIP
 DOC. 2022-0301478
 APN: 142-23-0095
 MCR

TRACT Y
 SHEILA HOMES LIMITED PARTNERSHIP
 DOC. 2022-0301478
 APN: 142-23-0095
 MCR

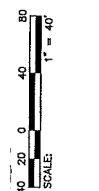
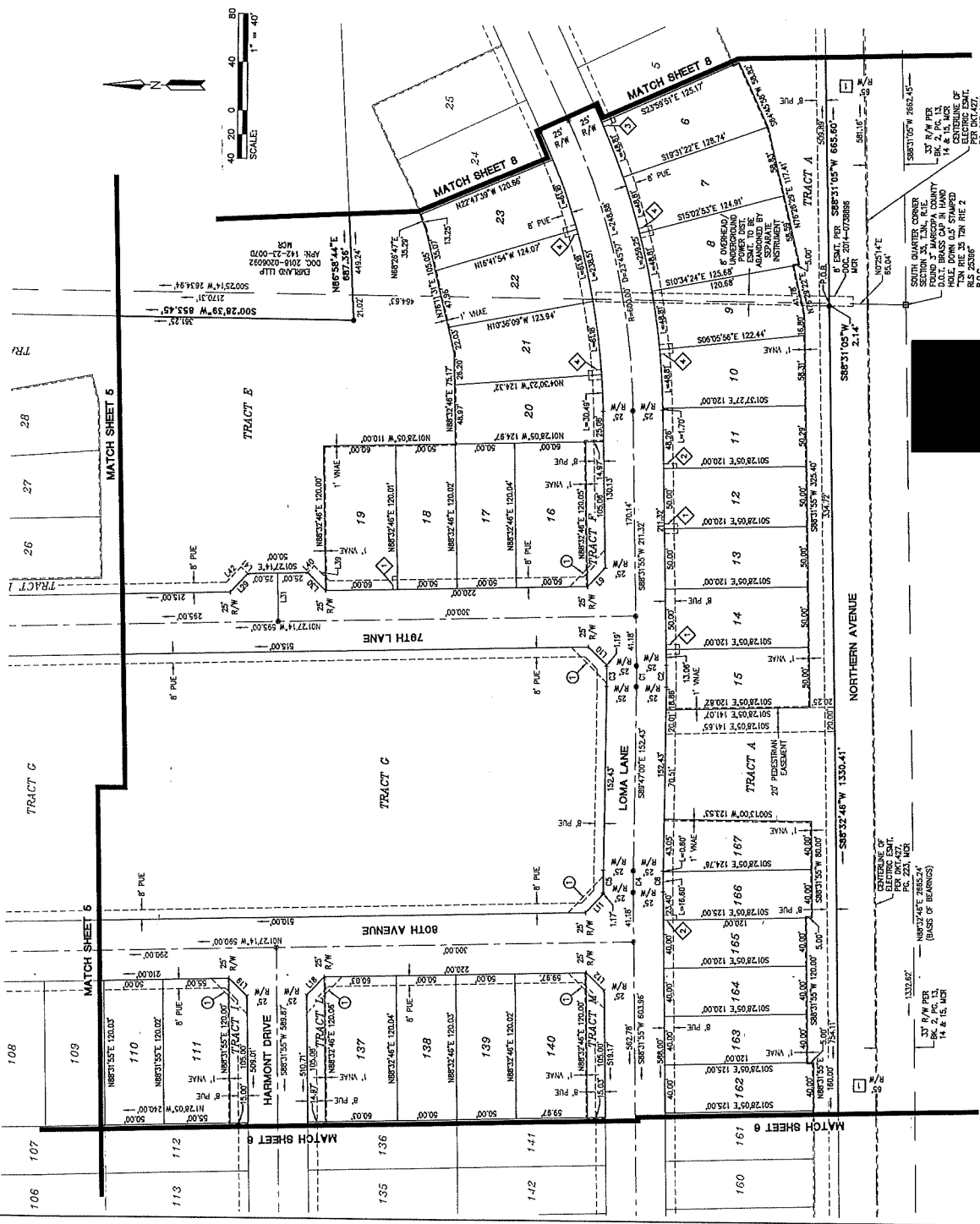
DWG. NO. **FP07**
 SHT. 7 OF 8
Z21-06 | **P22-01** | **R220048**

LEGEND

- FOUND MONUMENT AS NOTED
- FOUND BRASS CAP IN HAND HOLE
- SET 1/2" BRASS CAP FLUSH
- BOUNDARY LINE
- CENTER LINE
- RIGHT-OF-WAY
- PARCEL LINE
- EASEMENT LINE
- BOOK
- DOCKET
- EASEMENT
- RIGHT-OF-WAY
- PUBLIC UTILITY EASEMENT
- PEDESTRIAN ACCESS EASEMENT
- PAVE
- VME
- VEHICLE NON-ACCESS EASEMENT
- MARICOPA COUNTY RECORDS
- REGISTERED LAND SURVEYOR
- ASSESSOR PARCEL NUMBER
- APN
- P.O.B.
- P.O.C.
- POINT OF COMMENCEMENT
- SIGHT VISIBILITY TRIANGLE EASEMENT (30X30')
- WATER EASEMENT DETAIL
- DEDICATED R/W PER BK.
- PC
- MCR

LINE NO.	DIRECTION	LENGTH
L9	S46°27'30"E	21.07'
L10	N43°32'21"E	21.22'
L11	S46°27'30"E	21.21'
L12	N43°32'21"E	21.22'
L13	S46°27'30"E	21.21'
L14	N43°32'21"E	21.22'
L15	S46°27'30"E	21.21'
L16	N43°32'21"E	21.22'
L17	S46°27'30"E	21.21'
L18	N43°32'21"E	21.22'
L19	S46°27'30"E	21.21'
L20	N43°32'21"E	21.22'
L21	S46°27'30"E	21.21'
L22	N43°32'21"E	21.22'
L23	S46°27'30"E	21.21'
L24	N43°32'21"E	21.22'
L25	S46°27'30"E	21.21'

CURVE NO.	BEARINGS	DELTA	LENGTH
C1	S94.00°	141°05'	17.35'
C2	S85.00°	141°05'	18.08'
C3	S65.00°	141°05'	18.87'
C4	S10.00°	141°05'	17.94'
C5	S33.00°	141°05'	18.87'
C6	S85.00°	141°05'	17.20'



SOUTH QUARTER CORNER SECTION 24, T14N, R1E. HOLE DOWN 14\"/>

SOUTH QUARTER CORNER SECTION 24, T14N, R1E. HOLE DOWN 14\"/>

CENTRELINE OF 80TH AVENUE PER DKT. 427, PC 203, MCR



