

- LEGEND**
- SET BRASS CAP FLUSH (PER CONSTRUCTION PLAN) WITH 1/2" REBAR AS SHOWN OR AS NOTED
 - SET 1/2" REBAR PLS 30X75
 - M.C.R. MARICOPA COUNTY RECORDS
 - B.L./P.O. BOOK & PAGE
 - D.K.T. DOCUMENT NUMBER
 - A.P.N. ASSESSOR PARCEL NUMBER
 - P.P.T. PLAT
 - S.W.E. SEWER & WATER EASEMENT
 - U.V.E. UNOBSTRUCTED VIEW EASEMENT
 - V.O.E. VOUCHER NON-ACCESS EASEMENT
 - U.V.E. UNOBSTRUCTED VIEW EASEMENT (TYPICAL)
- SUBDIVISION BOUNDARY LINE
 --- LOT/TRACT LINE
 --- CENTER LINE
 --- EASEMENT LINE

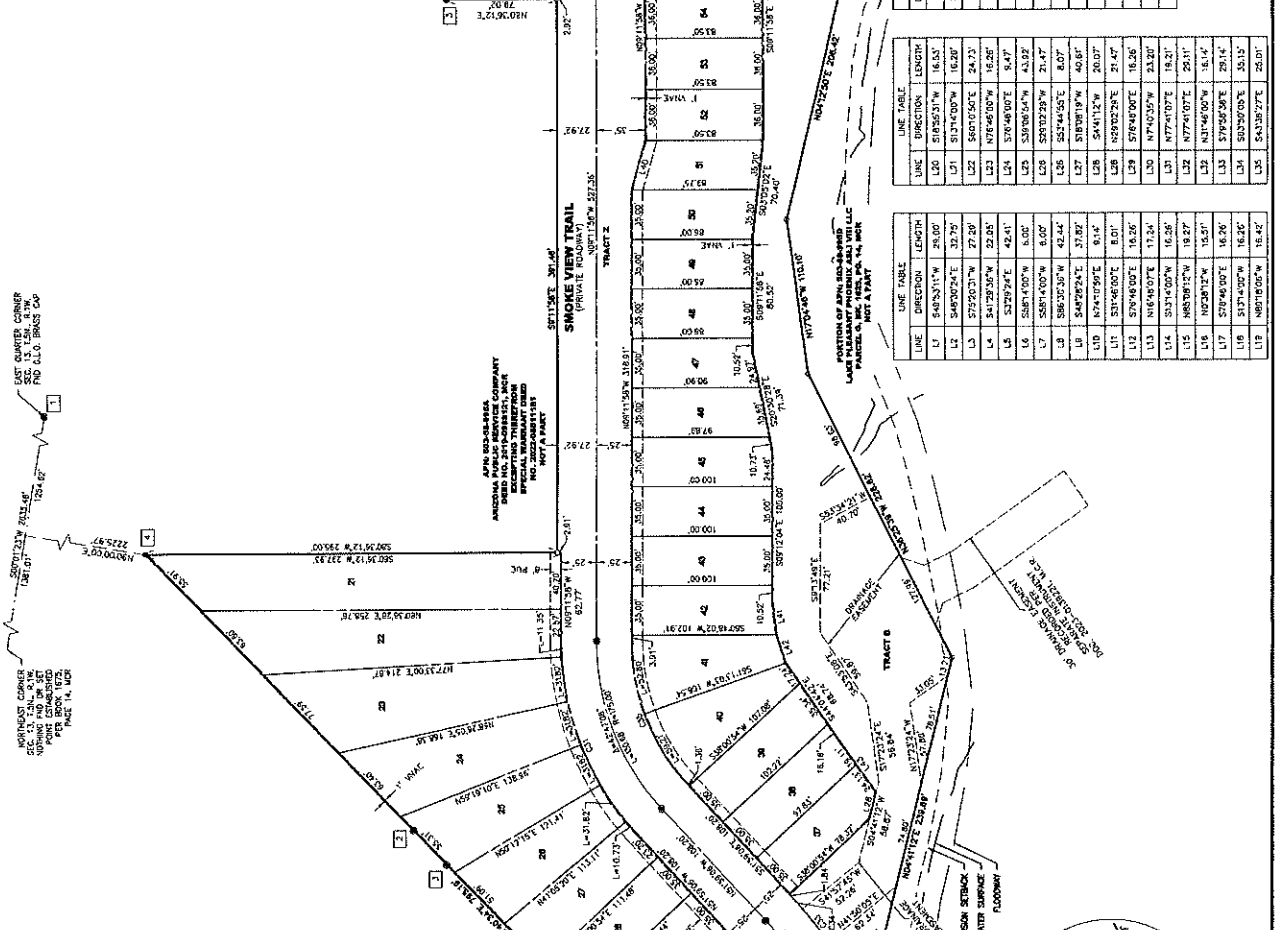
- MONUMENT NOTES**
- 1 EAST QUARTER CORNER SECTION 14, T.14N., R.11W., GENERAL LAND OFFICE BRASS CAP FLUSH FOUND ON L&L PARCELS 6, 8, 10, 12, 14, 16, 18, 20, 22, 24, 26, 28, 30, 32, 34, 36, 38, 40, 42, 44, 46, 48, 50, 52, 54, 56, 58, 60, 62, 64, 66, 68, 70, 72, 74, 76, 78, 80, 82, 84, 86, 88, 90, 92, 94, 96, 98, 100. NOT A PART.
 - 2 DEPARTMENT OF INTERIOR BRASS CAP FLUSH FOUND ON L&L.
 - 3 ALUMINUM CAP STAMPED 183323 FOUND ON L&L.
 - 4 1/2" REBAR WITH CAP LOCATED.
 - 5 BRASS CAP FLUSH, ALONG CENTERLINE OF EL MIRAGE ROAD.

FINAL PLAN
CYRENE AT MYSTIC FOOTHILLS
PEORIA, ARIZONA

ENGINEERING COMPANY
RICK
22425 N 65TH STREET SUITE #1
PHOENIX, AZ 85024
480.922.0780



NO.	REV.	DATE	REVISION
1		12/28/2022	



CURVE	DELTA	RADIUS	LENGTH	CHORD
C1	194.25°	250.00'	4.70'	531.37417' x 4.70'
C2	219.93°	250.00'	9.37'	519.50411' x 9.37'
C3	235.52°	250.00'	14.04'	485.78111' x 14.04'
C4	16.44°	250.00'	28.08'	540.78111' x 28.08'
C5	17.00°	250.00'	32.16'	540.78111' x 32.16'
C6	17.00°	250.00'	36.24'	540.78111' x 36.24'
C7	17.00°	250.00'	40.32'	540.78111' x 40.32'
C8	17.00°	250.00'	44.40'	540.78111' x 44.40'
C9	17.00°	250.00'	48.48'	540.78111' x 48.48'
C10	17.00°	250.00'	52.56'	540.78111' x 52.56'
C11	17.00°	250.00'	56.64'	540.78111' x 56.64'
C12	17.00°	250.00'	60.72'	540.78111' x 60.72'
C13	17.00°	250.00'	64.80'	540.78111' x 64.80'
C14	17.00°	250.00'	68.88'	540.78111' x 68.88'
C15	17.00°	250.00'	72.96'	540.78111' x 72.96'
C16	17.00°	250.00'	77.04'	540.78111' x 77.04'
C17	17.00°	250.00'	81.12'	540.78111' x 81.12'
C18	17.00°	250.00'	85.20'	540.78111' x 85.20'

LINE	DIRECTION	LENGTH	BEARING
L1	S 89° 28' 00" W	75.00'	89.468°
L2	S 89° 28' 00" W	75.00'	89.468°
L3	S 89° 28' 00" W	75.00'	89.468°
L4	S 89° 28' 00" W	75.00'	89.468°
L5	S 89° 28' 00" W	75.00'	89.468°
L6	S 89° 28' 00" W	75.00'	89.468°
L7	S 89° 28' 00" W	75.00'	89.468°
L8	S 89° 28' 00" W	75.00'	89.468°
L9	S 89° 28' 00" W	75.00'	89.468°
L10	S 89° 28' 00" W	75.00'	89.468°
L11	S 89° 28' 00" W	75.00'	89.468°
L12	S 89° 28' 00" W	75.00'	89.468°
L13	S 89° 28' 00" W	75.00'	89.468°
L14	S 89° 28' 00" W	75.00'	89.468°
L15	S 89° 28' 00" W	75.00'	89.468°
L16	S 89° 28' 00" W	75.00'	89.468°
L17	S 89° 28' 00" W	75.00'	89.468°
L18	S 89° 28' 00" W	75.00'	89.468°

- LEGEND**
- SET BRASS CAP FLUSH (PER CONSTRUCTION PLANS)
 - FOUND BRASS CAP IN HANDHOLE OR AS NOTED
 - SET 1/2" REBAR ILS 3076
 - M.C.R. MARICOPA COUNTY RECORDS
 - B.O.C. BOUNDARY CORNER
 - D.P.T. DEED/PLAT NUMBER
 - A.P.N. ASSESSOR PARCEL NUMBER
 - R/W RIGHT OF WAY
 - P.U.E. PUBLIC UTILITY EASEMENT
 - S.W.E. SEWER & WATER EASEMENT
 - U.N.E. UNRESTRICTED VIEW EASEMENT
 - U.A.C. UNRESTRICTED NON-ACCESS EASEMENT
 - U.N.C. UNRESTRICTED VIEW EASEMENT (TYPICAL)

LINE	DIRECTION	LENGTH	BEARING
L19	S 89° 28' 00" W	75.00'	89.468°
L20	S 89° 28' 00" W	75.00'	89.468°
L21	S 89° 28' 00" W	75.00'	89.468°
L22	S 89° 28' 00" W	75.00'	89.468°
L23	S 89° 28' 00" W	75.00'	89.468°
L24	S 89° 28' 00" W	75.00'	89.468°
L25	S 89° 28' 00" W	75.00'	89.468°
L26	S 89° 28' 00" W	75.00'	89.468°
L27	S 89° 28' 00" W	75.00'	89.468°
L28	S 89° 28' 00" W	75.00'	89.468°
L29	S 89° 28' 00" W	75.00'	89.468°
L30	S 89° 28' 00" W	75.00'	89.468°
L31	S 89° 28' 00" W	75.00'	89.468°
L32	S 89° 28' 00" W	75.00'	89.468°
L33	S 89° 28' 00" W	75.00'	89.468°
L34	S 89° 28' 00" W	75.00'	89.468°
L35	S 89° 28' 00" W	75.00'	89.468°
L36	S 89° 28' 00" W	75.00'	89.468°
L37	S 89° 28' 00" W	75.00'	89.468°
L38	S 89° 28' 00" W	75.00'	89.468°
L39	S 89° 28' 00" W	75.00'	89.468°
L40	S 89° 28' 00" W	75.00'	89.468°
L41	S 89° 28' 00" W	75.00'	89.468°
L42	S 89° 28' 00" W	75.00'	89.468°
L43	S 89° 28' 00" W	75.00'	89.468°
L44	S 89° 28' 00" W	75.00'	89.468°
L45	S 89° 28' 00" W	75.00'	89.468°
L46	S 89° 28' 00" W	75.00'	89.468°
L47	S 89° 28' 00" W	75.00'	89.468°
L48	S 89° 28' 00" W	75.00'	89.468°
L49	S 89° 28' 00" W	75.00'	89.468°
L50	S 89° 28' 00" W	75.00'	89.468°
L51	S 89° 28' 00" W	75.00'	89.468°
L52	S 89° 28' 00" W	75.00'	89.468°
L53	S 89° 28' 00" W	75.00'	89.468°
L54	S 89° 28' 00" W	75.00'	89.468°
L55	S 89° 28' 00" W	75.00'	89.468°
L56	S 89° 28' 00" W	75.00'	89.468°
L57	S 89° 28' 00" W	75.00'	89.468°
L58	S 89° 28' 00" W	75.00'	89.468°
L59	S 89° 28' 00" W	75.00'	89.468°
L60	S 89° 28' 00" W	75.00'	89.468°
L61	S 89° 28' 00" W	75.00'	89.468°
L62	S 89° 28' 00" W	75.00'	89.468°
L63	S 89° 28' 00" W	75.00'	89.468°
L64	S 89° 28' 00" W	75.00'	89.468°
L65	S 89° 28' 00" W	75.00'	89.468°
L66	S 89° 28' 00" W	75.00'	89.468°
L67	S 89° 28' 00" W	75.00'	89.468°
L68	S 89° 28' 00" W	75.00'	89.468°
L69	S 89° 28' 00" W	75.00'	89.468°
L70	S 89° 28' 00" W	75.00'	89.468°
L71	S 89° 28' 00" W	75.00'	89.468°
L72	S 89° 28' 00" W	75.00'	89.468°
L73	S 89° 28' 00" W	75.00'	89.468°
L74	S 89° 28' 00" W	75.00'	89.468°
L75	S 89° 28' 00" W	75.00'	89.468°
L76	S 89° 28' 00" W	75.00'	89.468°
L77	S 89° 28' 00" W	75.00'	89.468°
L78	S 89° 28' 00" W	75.00'	89.468°
L79	S 89° 28' 00" W	75.00'	89.468°
L80	S 89° 28' 00" W	75.00'	89.468°
L81	S 89° 28' 00" W	75.00'	89.468°
L82	S 89° 28' 00" W	75.00'	89.468°
L83	S 89° 28' 00" W	75.00'	89.468°
L84	S 89° 28' 00" W	75.00'	89.468°
L85	S 89° 28' 00" W	75.00'	89.468°
L86	S 89° 28' 00" W	75.00'	89.468°
L87	S 89° 28' 00" W	75.00'	89.468°
L88	S 89° 28' 00" W	75.00'	89.468°
L89	S 89° 28' 00" W	75.00'	89.468°
L90	S 89° 28' 00" W	75.00'	89.468°
L91	S 89° 28' 00" W	75.00'	89.468°
L92	S 89° 28' 00" W	75.00'	89.468°
L93	S 89° 28' 00" W	75.00'	89.468°
L94	S 89° 28' 00" W	75.00'	89.468°
L95	S 89° 28' 00" W	75.00'	89.468°
L96	S 89° 28' 00" W	75.00'	89.468°
L97	S 89° 28' 00" W	75.00'	89.468°
L98	S 89° 28' 00" W	75.00'	89.468°
L99	S 89° 28' 00" W	75.00'	89.468°
L100	S 89° 28' 00" W	75.00'	89.468°

LINE	DIRECTION	LENGTH
L101	S 89° 28' 00" W	75.00'
L102	S 89° 28' 00" W	75.00'
L103	S 89° 28' 00" W	75.00'
L104	S 89° 28' 00" W	75.00'
L105	S 89° 28' 00" W	75.00'
L106	S 89° 28' 00" W	75.00'
L107	S 89° 28' 00" W	75.00'
L108	S 89° 28' 00" W	75.00'
L109	S 89° 28' 00" W	75.00'
L110	S 89° 28' 00" W	75.00'
L111	S 89° 28' 00" W	75.00'
L112	S 89° 28' 00" W	75.00'
L113	S 89° 28' 00" W	75.00'
L114	S 89° 28' 00" W	75.00'
L115	S 89° 28' 00" W	75.00'
L116	S 89° 28' 00" W	75.00'
L117	S 89° 28' 00" W	75.00'
L118	S 89° 28' 00" W	75.00'
L119	S 89° 28' 00" W	75.00'
L120	S 89° 28' 00" W	75.00'

LINE	DIRECTION	LENGTH
L121	S 89° 28' 00" W	75.00'
L122	S 89° 28' 00" W	75.00'
L123	S 89° 28' 00" W	75.00'
L124	S 89° 28' 00" W	75.00'
L125	S 89° 28' 00" W	75.00'
L126	S 89° 28' 00" W	75.00'
L127	S 89° 28' 00" W	75.00'
L128	S 89° 28' 00" W	75.00'
L129	S 89° 28' 00" W	75.00'
L130	S 89° 28' 00" W	75.00'
L131	S 89° 28' 00" W	75.00'
L132	S 89° 28' 00" W	75.00'
L133	S 89° 28' 00" W	75.00'
L134	S 89° 28' 00" W	75.00'
L135	S 89° 28' 00" W	75.00'
L136	S 89° 28' 00" W	75.00'
L137	S 89° 28' 00" W	75.00'
L138	S 89° 28' 00" W	75.00'
L139	S 89° 28' 00" W	75.00'
L140	S 89° 28' 00" W	75.00'

LINE	DIRECTION	LENGTH
L141	S 89° 28' 00" W	75.00'
L142	S 89° 28' 00" W	75.00'
L143	S 89° 28' 00" W	75.00'
L144	S 89° 28' 00" W	75.00'
L145	S 89° 28' 00" W	75.00'
L146	S 89° 28' 00" W	75.00'
L147	S 89° 28' 00" W	75.00'
L148	S 89° 28' 00" W	75.00'
L149	S 89° 28' 00" W	75.00'
L150	S 89° 28' 00" W	75.00'
L151	S 89° 28' 00" W	75.00'
L152	S 89° 28' 00" W	75.00'
L153	S 89° 28' 00" W	75.00'
L154	S 89° 28' 00" W	75.00'
L155	S 89° 28' 00" W	75.00'
L156	S 89° 28' 00" W	75.00'
L157	S 89° 28' 00" W	75.00'
L158	S 89° 28' 00" W	75.00'
L159	S 89° 28' 00" W	75.00'
L160	S 89° 28' 00" W	75.00'

LINE	DIRECTION	LENGTH
L161	S 89° 28' 00" W	75.00'
L162	S 89° 28' 00" W	75.00'
L163	S 89° 28' 00" W	75.00'
L164	S 89° 28' 00" W	75.00'
L165	S 89° 28' 00" W	75.00'
L166	S 89° 28' 00" W	75.00'
L167	S 89° 28' 00" W	75.00'
L168	S 89° 28' 00" W	75.00'
L169	S 89° 28' 00" W	75.00'
L170	S 89° 28' 00" W	75.00'
L171	S 89° 28' 00" W	75.00'
L172	S 89° 28' 00" W	75.00'
L173	S 89° 28' 00" W	75.00'
L174	S 89° 28' 00" W	75.00'
L175	S 89° 28' 00" W	75.00'
L176	S 89° 28' 00" W	75.00'
L177	S 89° 28' 00" W	75.00'
L178	S 89° 28' 00" W	75.00'
L179	S 89° 28' 00" W	75.00'
L180	S 89° 28' 00" W	75.00'

LINE	DIRECTION	LENGTH
L181	S 89° 28' 00" W	75.00'
L182	S 89° 28' 00" W	75.00'
L183	S 89° 28' 00" W	75

