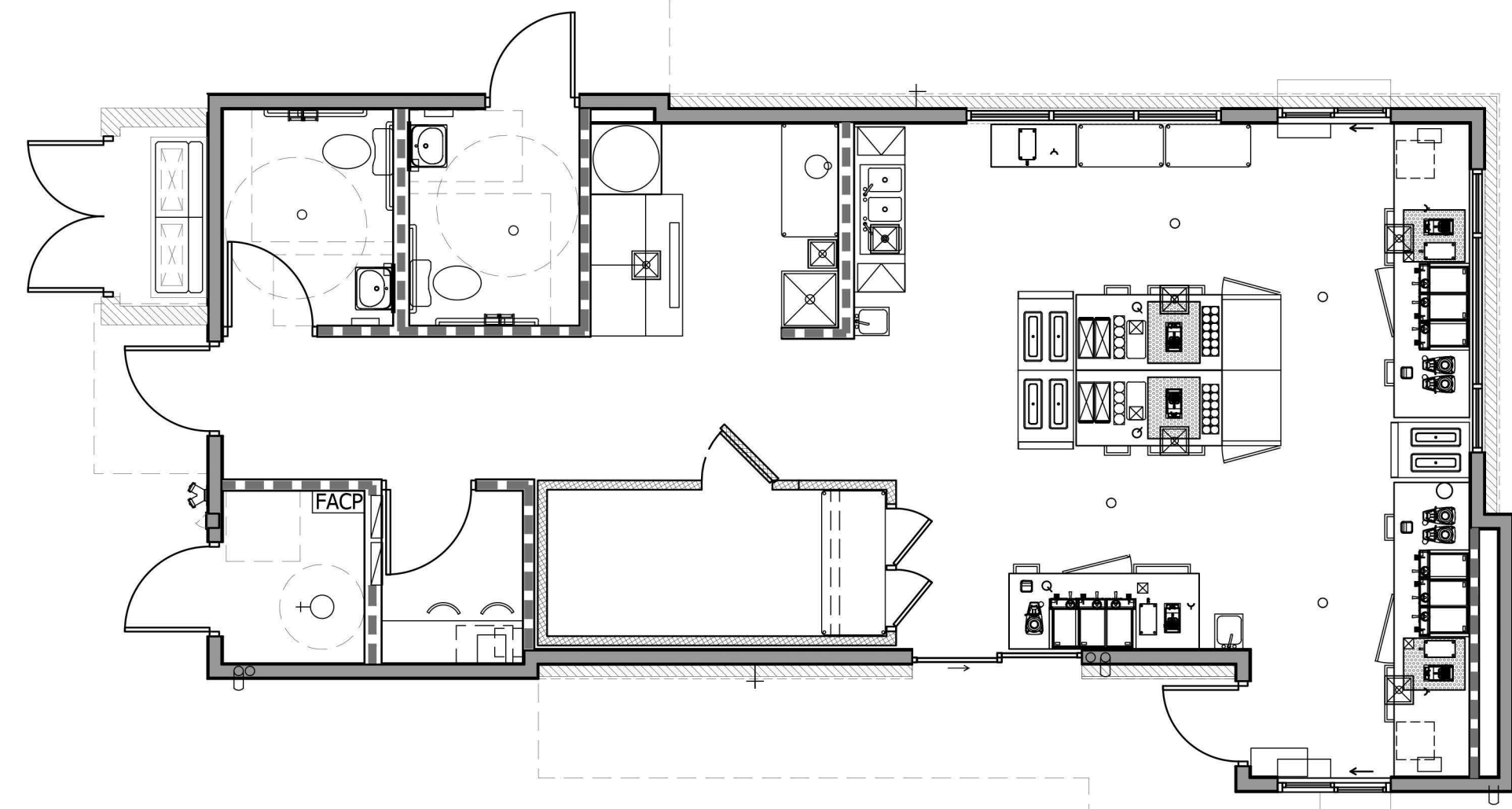


Dutch Bros. on Olive Avenue: CU23-05
North of the northeast corner of 91st Avenue and Olive Avenue

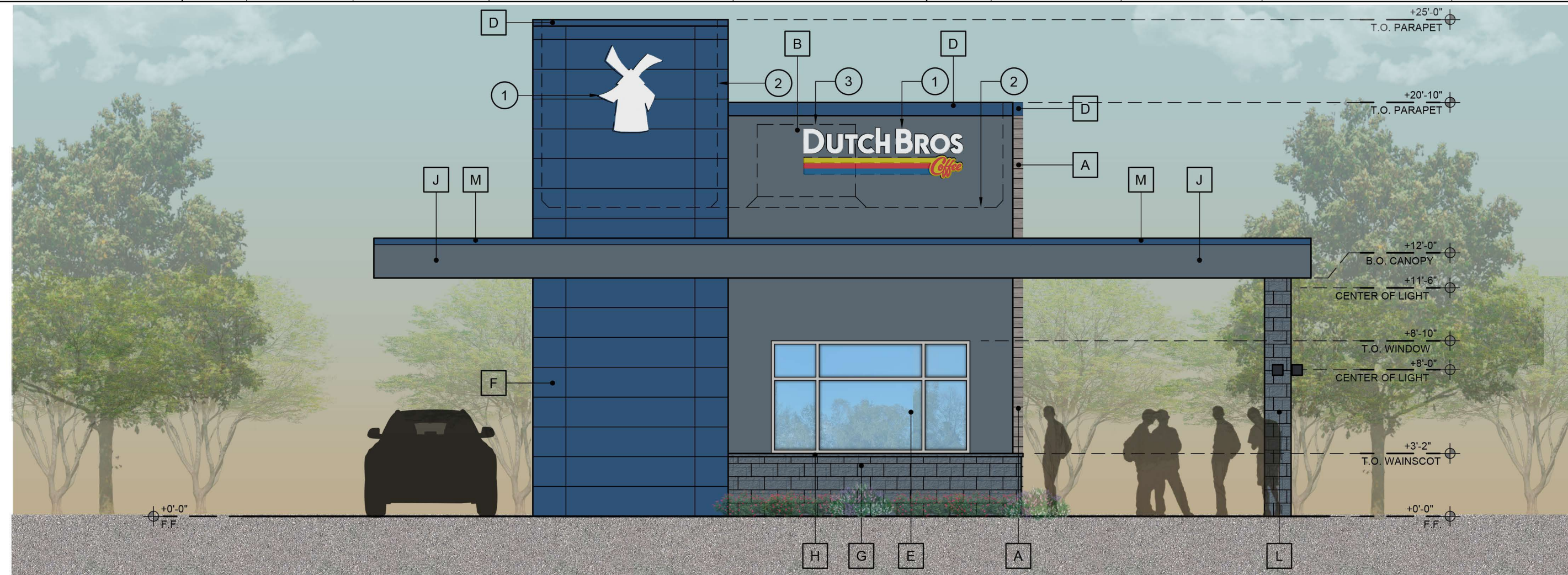




5 EQUIPMENT PLAN

SCALE: 3/16" = 1'-0"

#	KEYNOTES	FINISH SCHEDULE							
1.	SIGNAGE UNDER SEPARATE REVIEW AND PERMIT.								
2.	DASHED LINE INDICATES LINE OF ROOF BEYOND MECHANICAL ROOF TOP UNIT, FULLY SCREENED BY PARAPET.								
3.	BUILDING ADDRESS, VERIFY NUMBER, LOCATION AND EXACT SIZE WITH THE MUNICIPAL FDC LOCATION.								
4.	PROVIDE BLUE SPANDREL GLASS AT THIS WINDOW ONLY.								
5.	KNOX BOX LOCATION.								
ID TAG	MATERIAL	MANUFACTURER	MODEL	REMARKS	ID TAG	MATERIAL	MANUFACTURER	MODEL	REMARKS
ZONE 1 (BODY)					ZONE 3 (BASE)				
A	WOOD SIDING	NICHIHA	VINTAGE WOOD	COLOR: "ASH"	G	8" x 4" x 16" BLOCK VENEER	SUPERLITE	STANDARD SPLIT FACE BLOCK	COLOR: BLDG DB DARK GRAY
B	STUCCO	-	3-COAT SYSTEM WITH ACRYLIC MEDIUM SAND FINISH	COLOR: DB DARK GRAY	H	6" x 2" x 16" BLOCK CAP	SUPERLITE	STANDARD SMOOTH FACE BLOCK	COLOR: BLDG DB DARK GRAY
C	HOLLOW METAL DOOR	-	3'-0" x 7'-0"	COLOR: MATCH ADJACENT WALL FINISH COLOR	ZONE 4 (FRAMED CANOPY)				
D	METAL PARAPET CAP	WESTERN STATES METAL ROOFING	METAL FLASHING	COLOR: DB BLUE	J	FASCIA	WESTERN STATES METAL ROOFING	METAL FASCIA, FLAT	COLOR: (3 SIDES) BLDG DB DARK GRAY
E	STOREFRONT SYSTEM	KAWNEER OR APPROVED EQUAL	ALUMINUM STOREFRONT SYSTEM W/ 1" CLEAR INSULATED GLAZING VALUE: (U=0.29, SHGC = .028)	COLOR: CLEAR ANODIZED	K	SOFFIT	HEWN ELEMENTS	EXTERIOR CEDAR SIDING, COLOR: "STORM GRAY"	1x8, T&G 1/8" REVEAL
ZONE 2 (TOWER)					L	8" x 4" x 16" BLOCK VENEER COLUMN	SUPERLITE	STANDARD SPLIT FACE BLOCK	COLOR: BLDG DB DARK GRAY
F	HORIZONTAL SIDING	NICHIHA	ILLUMINATION	COLOR: DB BLUE	M	METAL PARAPET CAP	WESTERN STATES METAL ROOFING	METAL FLASHING	COLOR: DB BLUE
					P	PRE-FABRICATED METAL CANOPY	-	-	COLOR: BLDG DB DARK GRAY



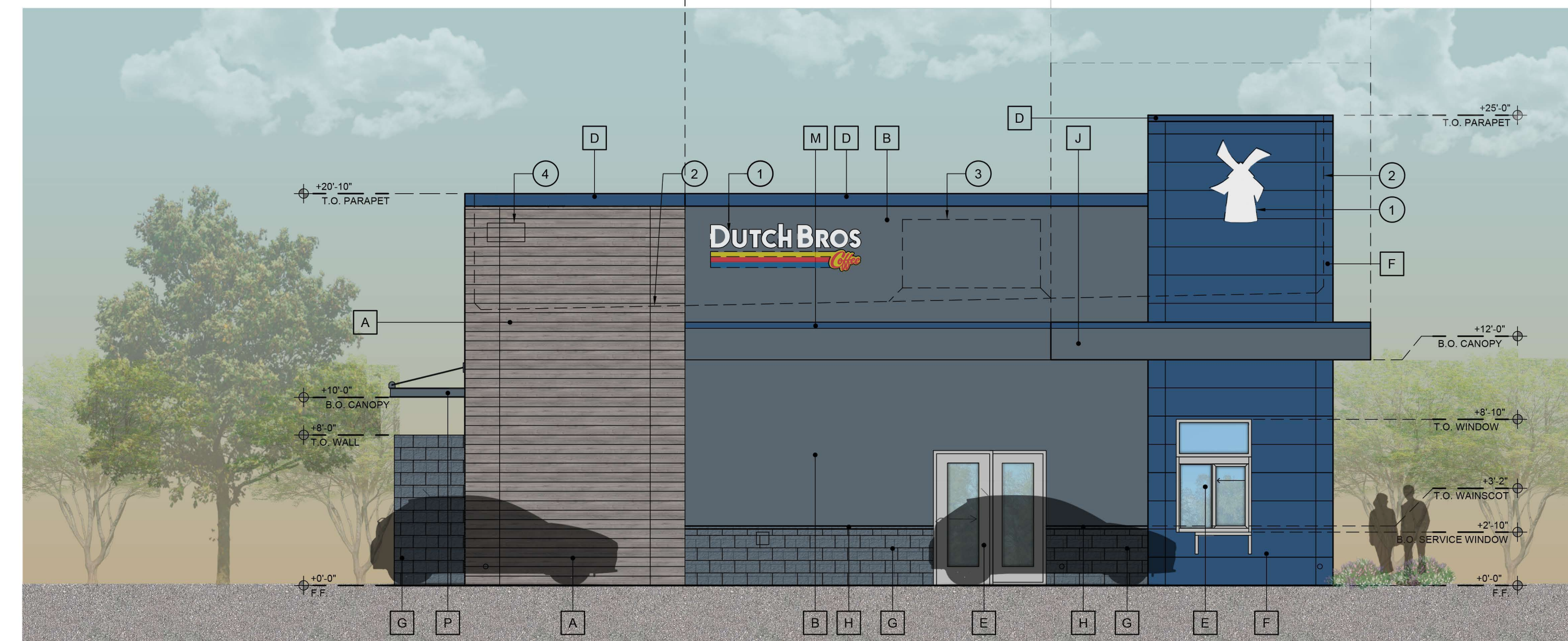
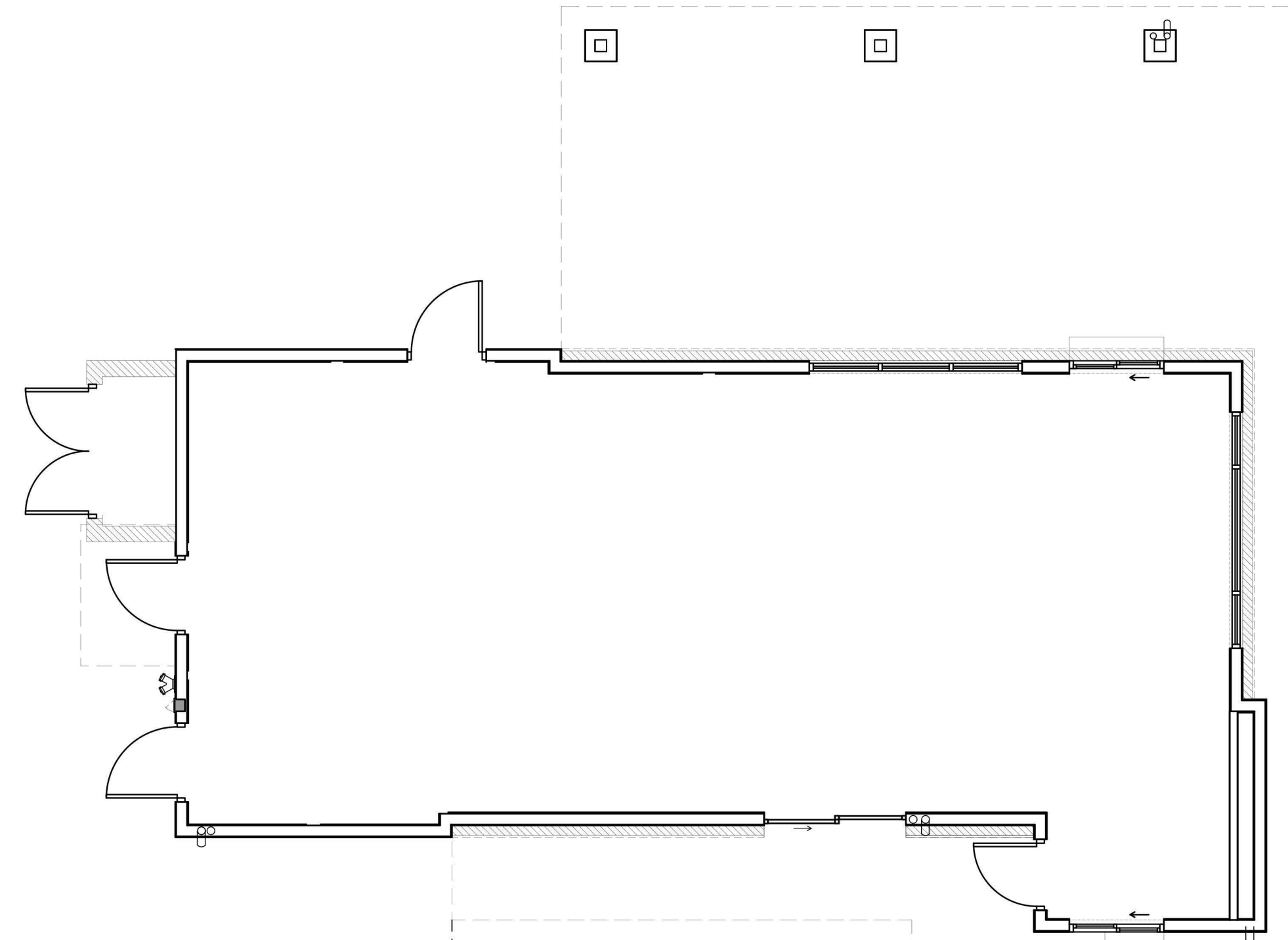
4 EAST EXTERIOR ELEVATION - FRONT

SCALE: 3/16" = 1'-0"



2 WEST EXTERIOR ELEVATION - BACK

SCALE: 3/16" = 1'-0"



3 SOUTH EXTERIOR ELEVATION - DRIVE-THRU

SCALE: 3/16" = 1'-0"

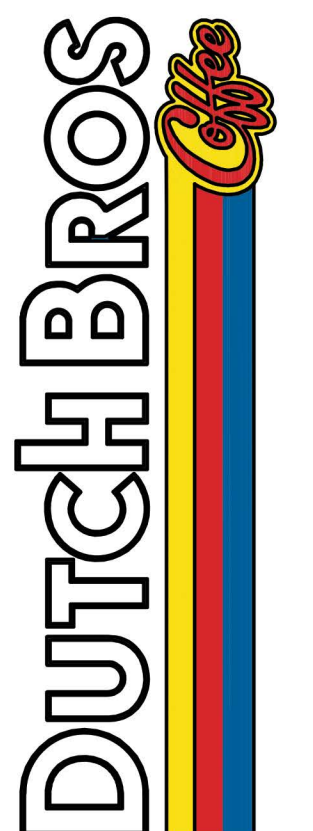


1 NORTH EXTERIOR ELEVATION - PATIO

CASE # SP23-09 SCALE: 3/16" = 1'-0" DATE: 06.06.23

PRELIMINARY
NOT FOR
CONSTRUCTION
OR RECORDING

©2023 OWNERSHIP OF SERVICE - All reports, plans, specifications, notes and information prepared by PHNX DESIGN and their consultants shall remain the property thereof. PHNX DESIGN shall retain all common law, statutory and other reserved rights, including the copyright thereto.



DUTCH BROS COFFEE
9113 NORTH 91st AVENUE
PEORIA, ARIZONA 85347

DATE	REVISION
1	06.06.23 REVISION
2	
3	
4	
5	