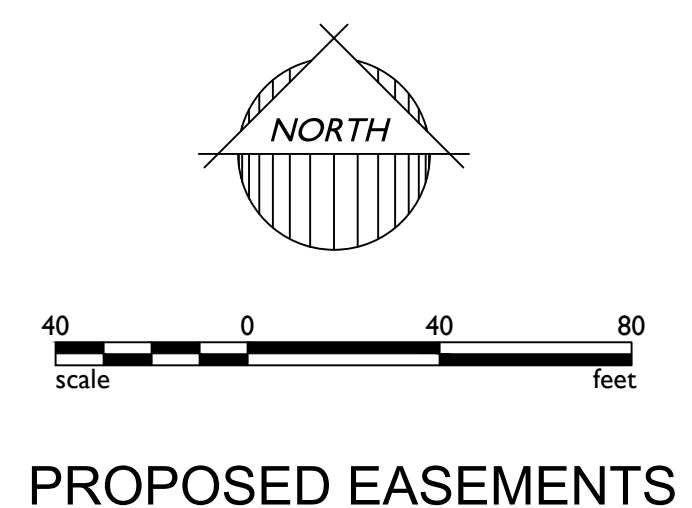
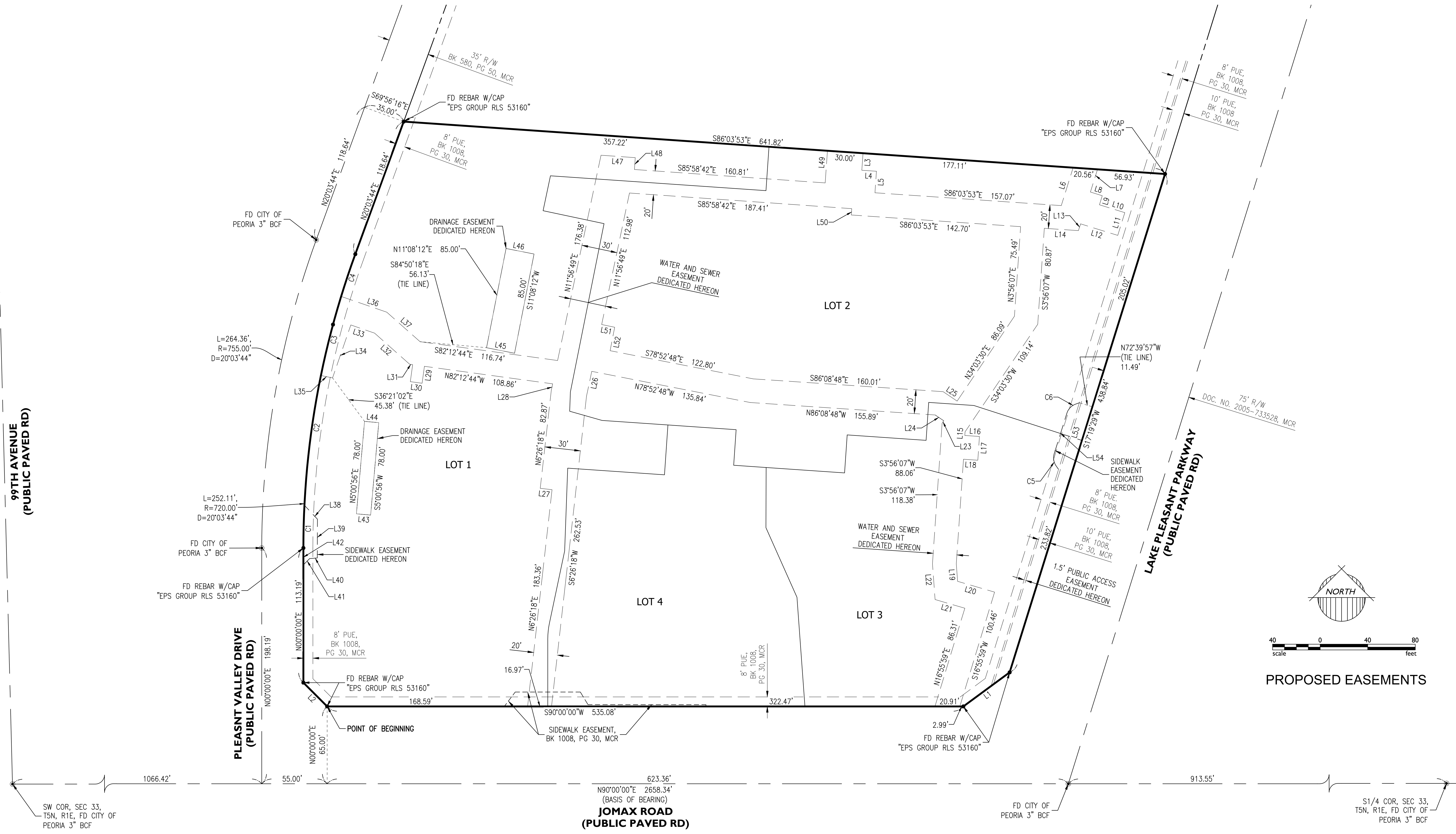


Nov 13, 2023 8:57am S:\Projects\2022\22-0298\Land Survey\Drawings\Re-Plat\22-0298 - Final Plat.dwg



LINE	BEARING	LENGTH
L1	S53°39'44"W	48.33'
L2	S45°00'00"E	28.28'
L3	S04°01'18"W	14.38'
L4	S86°12'09"E	12.32'
L5	S03°56'07"W	18.15'
L6	N17°19'45"E	33.41'
L7	S17°19'45"W	20.00'
L8	S72°48'02"E	10.41'
L9	S17°11'58"W	8.00'
L10	S72°48'02"E	22.34'

LINE	BEARING	LENGTH
L11	S17°11'58"W	20.00'
L12	N72°48'02"W	32.81'
L13	S18°19'13"W	5.97'
L14	N86°03'53"W	28.71'
L15	S03°56'07"W	3.05'
L16	S86°03'53"E	12.35'
L17	S03°56'07"W	20.00'
L18	N86°03'53"W	12.08'
L19	S04°10'34"E	14.82'
L20	S73°44'01"E	32.42'

LINE	BEARING	LENGTH
L21	N73°44'01"W	26.08'
L22	N04°10'34"W	30.12'
L23	S34°03'30"W	2.51'
L24	S55°56'30"E	8.75'
L25	S55°56'30"E	14.14'
L26	S11°56'49"W	21.26'
L27	N83°33'42"W	10.00'
L28	S11°56'49"W	5.62'
L29	S07°47'16"W	10.85'
L30	N82°12'44"W	10.00'

LINE	BEARING	LENGTH
L31	N82°12'44"W	2.49'
L32	N48°27'44"W	39.48'
L33	N70°57'44"W	21.13'
L34	S19°02'16"W	47.09'
L35	N78°27'23"W	10.00'
L36	S70°57'44"E	40.61'
L37	S48°27'44"E	37.39'
L38	N43°06'27"W	16.01'
L39	N00°11'01"E	32.59'
L40	N85°12'29"E	6.51'

LINE	BEARING	LENGTH
L41	N44°46'32"E	7.45'
L42	N00°01'02"E	14.21'
L43	N84°59'04"W	12.00'
L44	S84°59'04"E	12.00'
L45	N78°51'48"W	24.00'
L46	S78°51'48"E	24.00'
L47	S85°58'42"E	28.90'
L48	S04°01'18"W	10.00'
L49	N04°01'18"E	27.11'
L50	S03°56'07"W	5.35'

LINE	BEARING	LENGTH
L51	N78°03'11"W	11.19'
L52	N11°07'12"E	20.08'
L53	S17°19'29"W	58.71'
L54	N17°24'15"E	30.95'

CURVE	LENGTH	RADIUS	DELTA	TANGENT	CHORD	CHORD BRG
C1	35.90'	720.00'	2°51'26"	17.96'	35.90'	S01°25'43"W
C2	110.07'	720.00'	8°45'34"	55.14'	109.97'	S07°14'12"W
C3	68.65'	720.00'	5°27'47"	34.35'	68.62'	S14°20'53"W
C4	37.48'	720.00'	2°58'58"	18.75'	37.48'	S18°34'15"W
C5	11.00'	12.00'	52°30'57"	5.92'	10.62'	N08°55'59"W
C6	11.00'	12.00'	52°31'26"	5.92'	10.62'	N43°34'43"E

1130 N. Alma School Rd, Suite 120
 Mesa, AZ 85201
 T:480.503.2250 | F:480.835.1799
 www.epsgroupinc.com

EPS GROUP

Project: **HOME2 SUITES**
 PEORIA, ARIZONA
FINAL PLAT

Revisions:

Drawn by: **DH**
 Reviewed by: **MP**

REGISTERED LAND SURVEYOR
 CERTIFICATE NO. 45378
 MICHAEL D. POLLOCK
 State of Arizona, U.S.A.

Job No. **22-0298**
FP01
 Sheet No. **4**
 of 4