

Caring for Angels: CU23-11

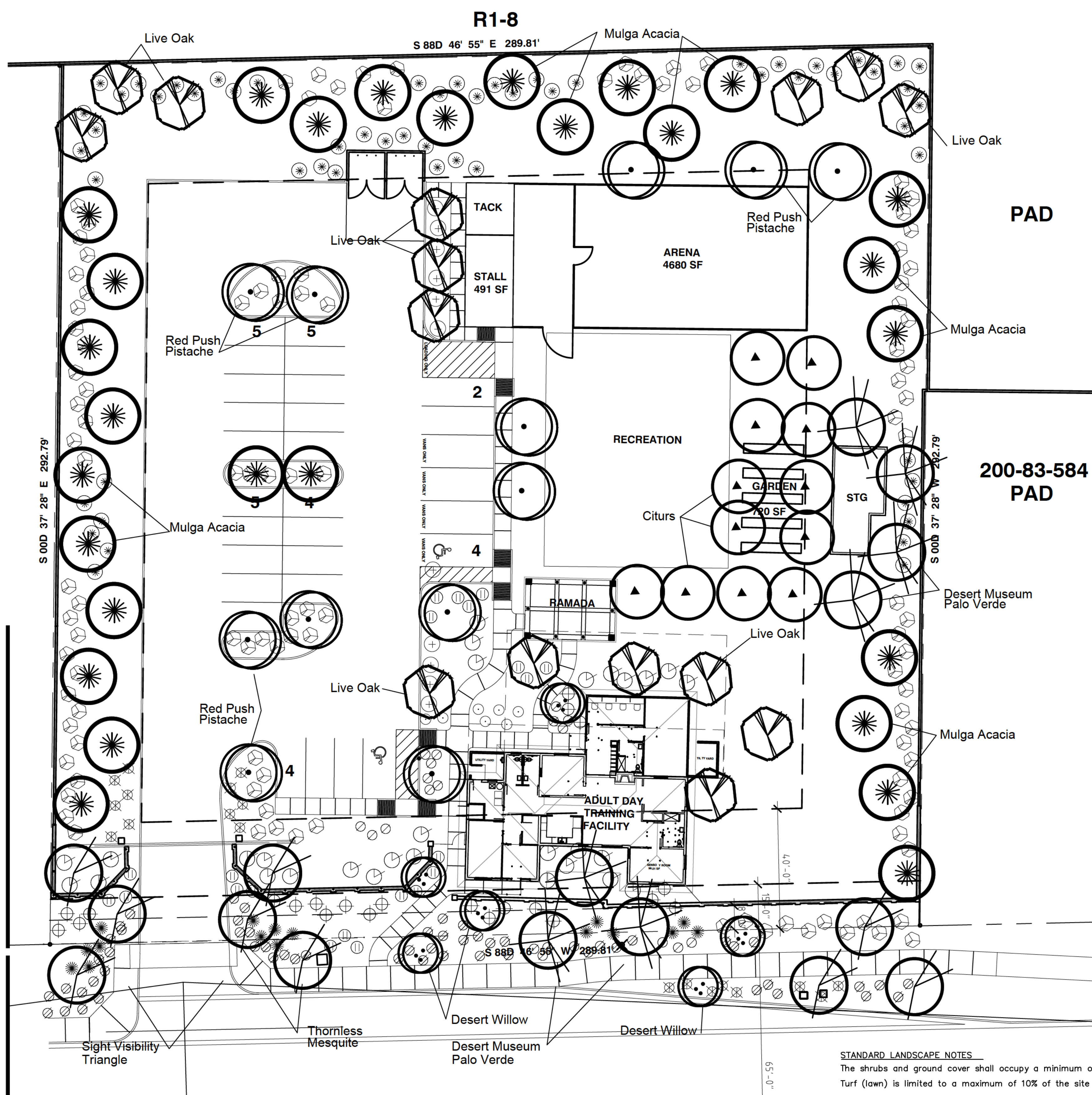
6902 W. Cactus Road



PLANT MATERIAL LEGEND

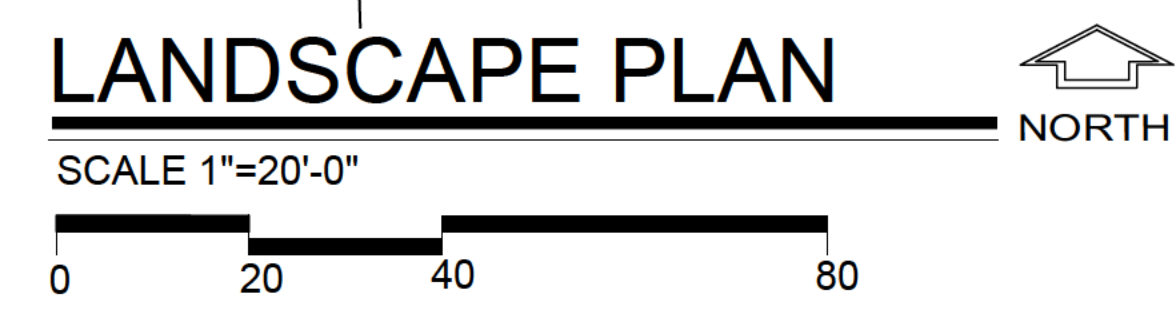
KEY	SYMBOL	BOTANICAL/Common Name	SIZE (Height, Canopy, & Caliper)	QUANT
TREES				
		Prosopis hybrid 'Phoenix' Thornless Hybrid Mesquite	15 Gal 6' 2' .75"	4
		24" Box 8' 4' 1.5"	Double-Staked Typ.	5
		Pistacia a. 'Red Push' Red Push Pistache	15 Gal 8' 2' 1"	7
		24" Box 10' 4' 1.5"	Double-Staked Typ.	5
		Acacia aneura Mulga	24" Box 7' 4' 1.5"	26
		Double-Staked Typ.		
		Chilopsis linearis Desert Willow	24" Box 7' 4' 1.25"	6
		Double-Staked Typ.		
		Quercus virginiana Heritage Live Oak	15 Gal 6' 2' .75"	7
		24" Box 9' 4' 1.25"	Double-Staked Typ.	9
		Parkinsonia hybrid 'Desert Museum' Desert Museum Palo Verde	15 Gal 7' 2.5' .75"	3
		24" Box 9' 4' 1.5"	Double-Staked Typ.	4
		Citrus varieties Ruby Red Grapefruit Valencia Orange Lisbon Lemon Clementine Tangerine	24" Box 10' 4' 1.25"	12
		Double-Staked Typ.		
LARGE SHRUBS				
		Eremophila 'Valentine' Valentine Bush	5 Gallon	14
		Leucophyllum laevigatum Chihuahuan Sage	5 Gallon	109
		Olea europaea 'Little Ole' Little Ole	5 Gallon	31
		Nerium a. 'Petite Pink' Petite Pink Oleander	5 Gallon	59
MEDIUM AND SMALL SHRUBS				
		Rosmarinus officinalis 'Prostratus' Dwarf Rosemary	5 Gallon	7
		Callistemon c. 'Little John' Little John Bottle Brush	5 Gallon	31
		Muhlenbergia capillaris 'Regal Mist' Regal Mist Deer Grass	5 Gallon	19
		Ruellia peninsularis Baja Ruellia	5 Gallon	24
GROUNDCOVERS				
		Eremophila g. 'Mingenew Gold' Mingenew Gold	1 Gallon	57
		Lantana m. 'New Gold' New Gold Lantana	1 Gallon	22
ACCENTS				
		Hesperaloe parviflora Red Yucca	5 Gallon	16
LANDSCAPE MATERIALS				
		Decomposed Granite Desert Gold	1/2" size screened 2" Deep	
		Concrete Header	4" x 6", Curbstyle 2" Deep	
		Midiron Bermuda	Sod 4768 s.f.	

PARKING AREA LANDSCAPE NOTES
 For Every 8 parking spaces, 1 parking lot island shall be provided. Landscape island shall be provided at the end of each row of parking. Each landscape island shall include 1 tree and 3 shrubs. Landscape medians shall be installed for all double rows of parking which exceed 30 total spaces. A 2 foot overhang may be included in the 7 foot wide median. Landscape island shall be a minimum of 7 feet wide as measured from back of curb to back of curb, and equal to the length of the parking stall. Landscape medians shall include 1 shrub for every 5 linear feet of landscaping with a minimum of 1 tree between landscape islands. For multi-level parking structures, a minimum 10 foot landscape area shall be located around the perimeter of the structure.



STANDARD LANDSCAPE NOTES
 The shrubs and ground cover shall occupy a minimum of 30% of the street frontage landscape area at maturity. Turf (lawn) is limited to a maximum of 10% of the site area and limited to slopes equal or greater than 6:1. The maximum separation between the canopy of trees, shrubs, or groundcover shall not exceed 10 feet in any direction as measured at maturity. All landscaped areas shall be supported by an automatic irrigation system which may be spray, flood or drip system. Plant materials must be included on the most recent edition of the Phoenix Active Management Area Low Water Use/Drought Tolerant Plant List. The Property Owner and/or Lessee shall be responsible to install/maintain all landscaping within the R.O.W. A 3 foot clear space is required around all fire suppression equipment. No plants may be installed that will encroach when mature. All trees and shrubs shall be installed a minimum of 2.5 feet from back of curb. Ground surface treatment, such as decomposed granite, shall be 3/4" at a 2" depth. Turf shall not be within the right-of-way or any space less than 8 feet in width or length.

SITE PLAN PLANTING DATA		
LANDSCAPE AREAS	REQUIRED	PROVIDED
A ON SITE LANDSCAPE AREA		
1. Overall On-Site		
Industrial: 10% of Net Site Area	16,948 sq. ft.	50,984 sq. ft.
Multifamily or Commercial: 20% of net site area (84,922)(20%)		
PLANT QUANTITIES		
Street Frontage Landscaping		
Multi-family or Commercial (15 foot width) Linear Feet		
Industrial (10 foot width) 289 feet		
A Trees: 1 per 25 ft. of street frontage	12 trees	12 trees
B Shrubs: 3 per 25' of street frontage	36 shrubs	75 shrubs
Landscape Use Buffer if Adjacent to Residential		
Landscape Use Buffer (873 feet)		
RM-1, O-1, or C-1 (20 feet wide)		
All other zoning districts (30 feet wide)		
C. Trees: 3 per 1000 square feet (24" box min)	26 trees	26 trees
D. Shrubs: 3 per 1000 square feet	78 shrubs	78 shrubs
On-Site Landscape Areas		
Multifamily and Commercial		
On-Site Landscape Areas (16,948)	34 trees	34 trees
E. Trees: 1 per 500 sq. ft., of req. landscaping	102 shrubs	136 shrubs
F. Shrubs: 3 per 500 sq. ft., of req. landscaping		
Landscape Parking Median (for double rows)		
G. Trees: 1 between landscape islands	0 trees	0 trees
H. Shrubs: 1 per 5 linear feet of landscaping	0 shrubs	0 shrubs
Parking Island Plantings		
Number of Parking Islands (7)		
I. Trees: 1 per parking island	7 trees	7 trees
J. Shrubs: 3 per parking island	21 shrubs	30 shrubs
TOTALS		
Total Landscape Areas	16,948 sq. ft.	50,984 sq. ft.
Total Trees (A + E + G + I)	53 trees	53 trees
Total Shrubs (B + F + H + J)	159 shrubs	241 shrubs



202301 CARING FOR ANGELS
 8/21/2023 CURRENT DATE