

PROJECT DIRECTORY

APPLICANT: ABERNATHEY DEVELOPMENT
 3320 WESTRAC DRIVE SUITE D
 FARGO, ND 58103
 CONTACT: ANDREW ABERNATHEY
 PHONE: (701) 263-7425
 E-MAIL: aa@adernatheyholdingco.com

ARCHITECT: RKAA ARCHITECTS, INC.
 2233 E. THOMAS ROAD
 PHOENIX, AZ 85016
 CONTACT: MATTHEW SARGENT
 PHONE: (602) 955-3900
 E-MAIL: msargent@rkaa.com

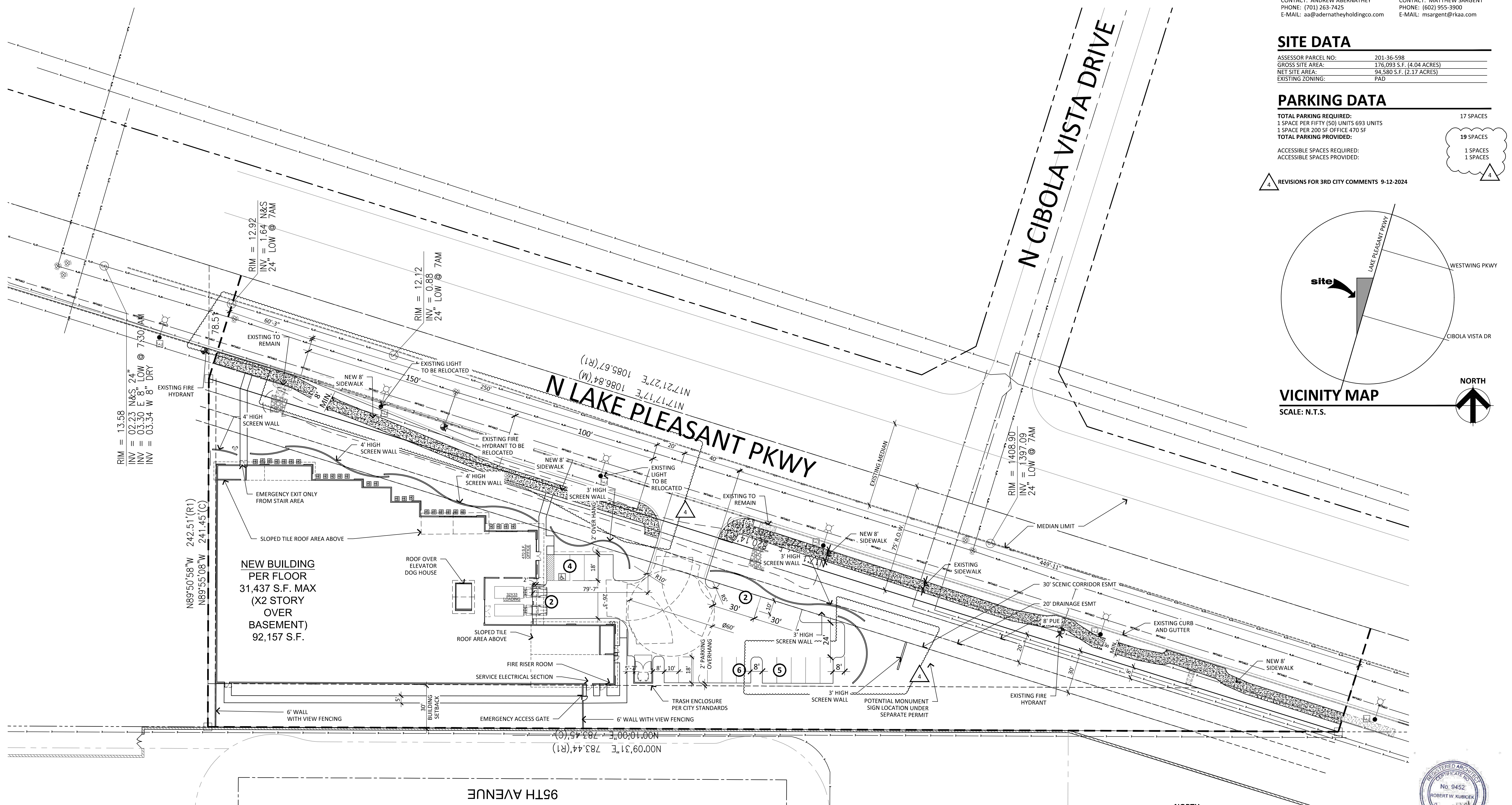
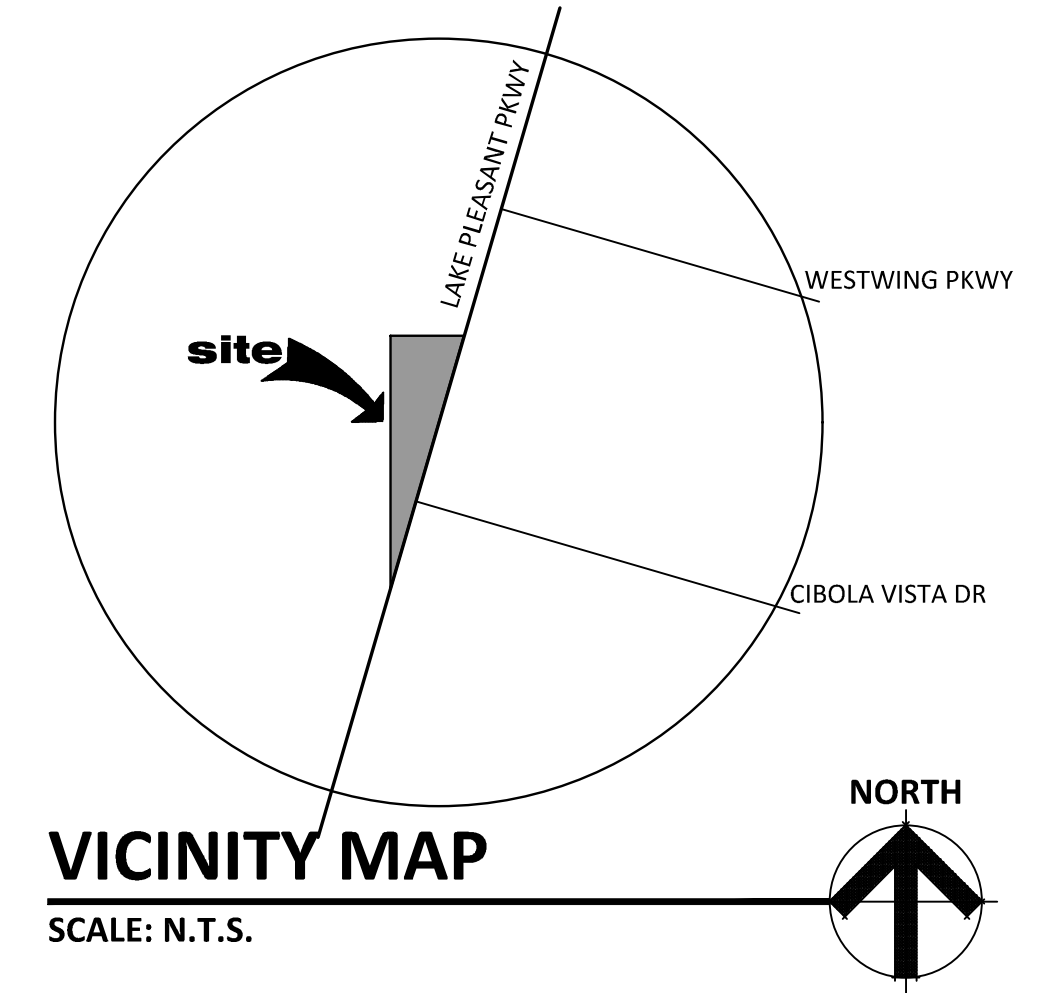
SITE DATA

ASSESSOR PARCEL NO:	201-36-598
GROSS SITE AREA:	176,093 S.F. (4.04 ACRES)
NET SITE AREA:	94,580 S.F. (2.17 ACRES)
EXISTING ZONING:	PAD

PARKING DATA

TOTAL PARKING REQUIRED:	17 SPACES
1 SPACE PER FIFTY (50) UNITS 693 UNITS	
1 SPACE PER 200 SF OFFICE 470 SF	
TOTAL PARKING PROVIDED:	19 SPACES
ACCESSIBLE SPACES REQUIRED:	1 SPACES
ACCESSIBLE SPACES PROVIDED:	1 SPACES

REVISIONS FOR 3RD CITY COMMENTS 9-12-2024



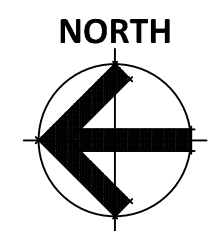
SITE PLAN
 SCALE: 1" = 30'-0"



PROPOSED SELF STORAGE FACILITY
 NWC LAKE PLEASANT & CIBOLA VISTA
 PEORIA, ARIZONA
 DATE: 09-16-2024 (PRELIMINARY)

SP-1

RKAA# 22048.50



© 2024 RKAA ARCHITECTS, INC. ALL RIGHTS RESERVED. THIS DRAWING IS AN INSTRUMENT OF SERVICE. IT IS THE PROPERTY OF RKAA ARCHITECTS, INC. AND MAY NOT BE DUPLICATED, USED OR DISCLOSED WITHOUT WRITTEN PERMISSION OF THE ARCHITECT.

SP22-34/ CU22-08
 REVISED 8/1/2024

Exhibit 4

