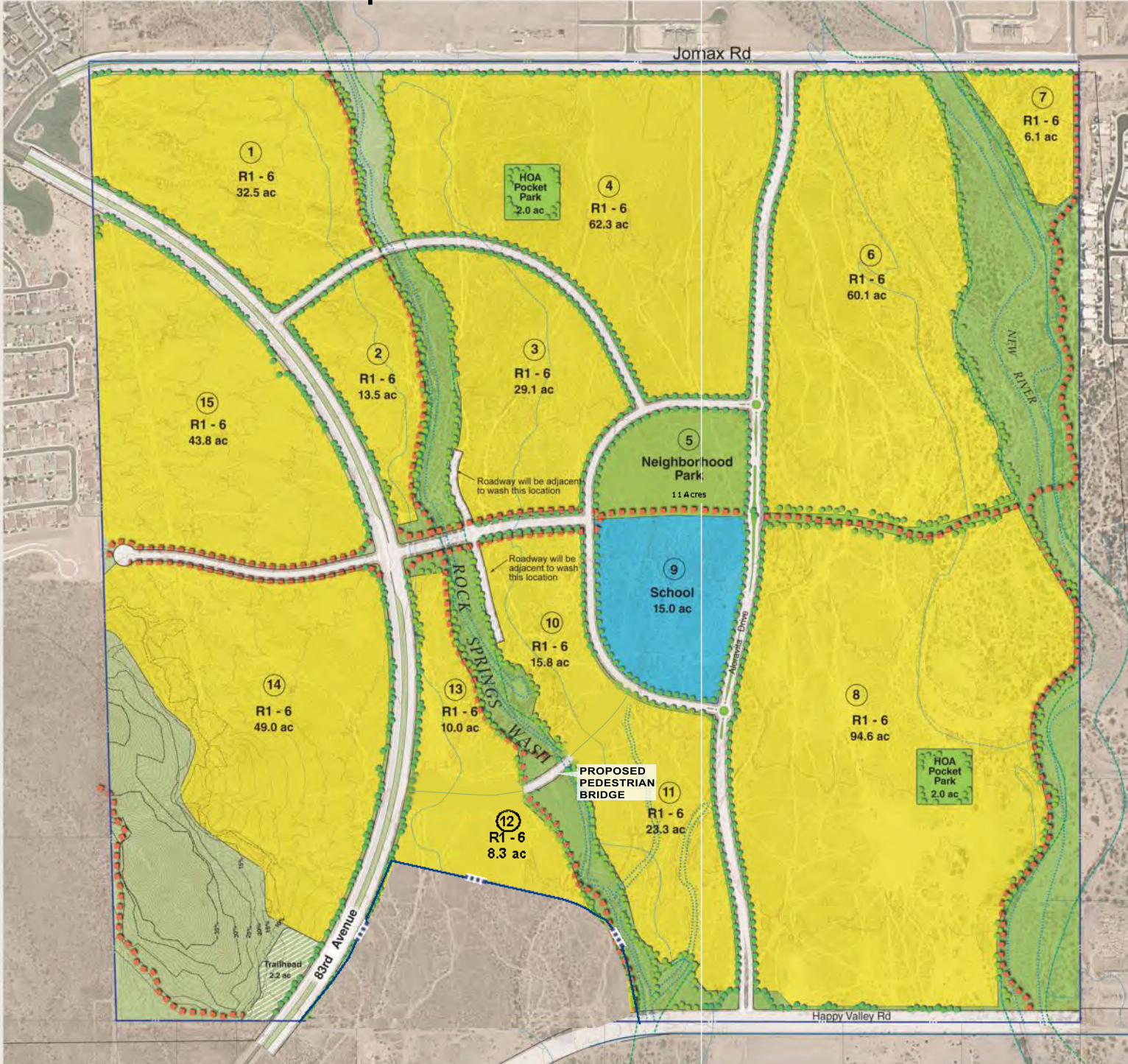
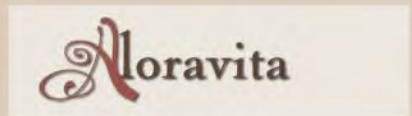


Exhibit 2 - Conceptual Plan



Land Use Plan



SITE DATA

Parcel No.	Proposed Zoning	Gross Area, ac	Density DU/ac	Total No. of Lots ¹
1	R1-6	32.5	4.22	137
2	R1-6	13.5	4.22	57
3	R1-6	29.1	4.22	122
4	R1-6	62.3	4.22	262
6	R1-6	60.1	4.22	254
7	R1-6	6.1	4.22	25
8	R1-6	94.6	4.22	399
9	School	15.0	-	0
10	R1-6	15.8	4.22	67
11	R1-6	23.3	4.22	98
12	R1-6	8.3	4.22	35
13	R1-6	10.0	4.22	42
14	R1-6	49.0	4.22	207
15	R1-6	43.8	4.22	185
		113.9	(140.3) ³	
		24.4		
Total		601.7		1,890

¹ Residential densities may be transferred between Parcels provided that a) the total number of lots for any Development Unit does not exceed a 10% range and b) the total build-out for Units does not exceed 2000 lots. As the project is developed, Preliminary and Final plats will keep a tally of approved lots.

LEGEND

Proposed Zoning	Area, ac	Density ² DU/ac	Total No. of Lots
R1-6	448.4	4.22	1,890
School	15.0	-	-
Parks, Open Space	113.9 (140.3) ³	-	-
Arterial R.O.W.	24.4	-	-
Total	601.7		1,890

² Indicates average density for this zoning category. Actual density may vary for individual parcels to achieve designated number of lots.
³ Gross Area shown for open space and parks of 113.9 acres does not include open space within the parcels. Including these areas, total open space is 140.3 acres. For more detail, see the Open Space Plan.

