

EXTERIOR FINISHES

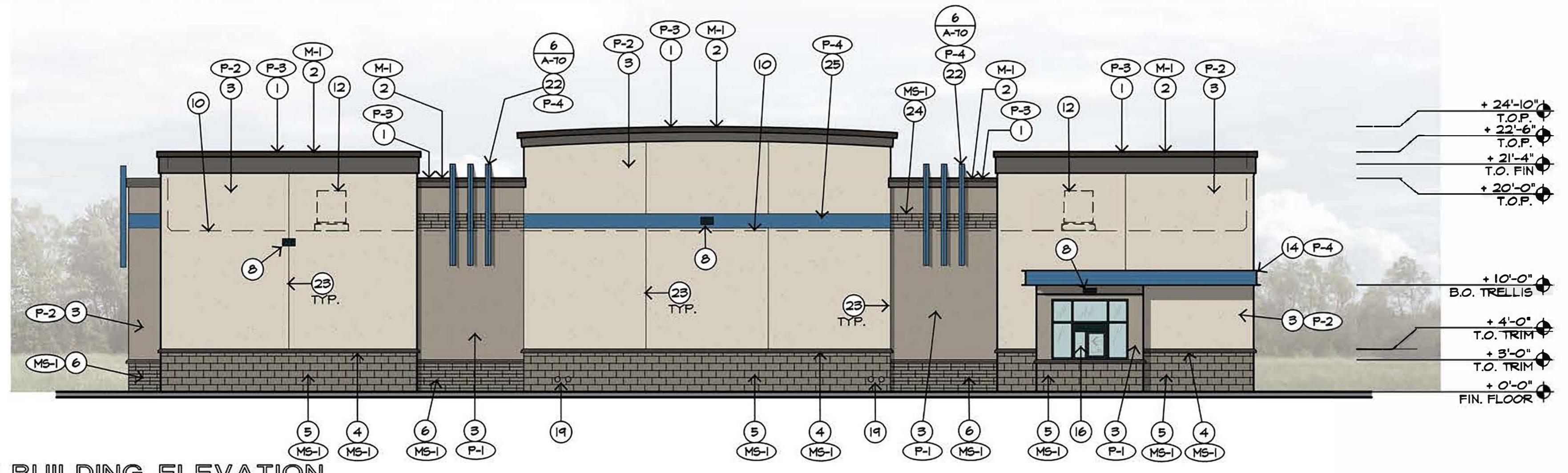
- F1. STUCCO SYSTEM: WESTERN ONE-KOTE STUCCO SYSTEM WITH SYNTHETIC FINISH COAT OVER 1" RIGID INSULATION. MECHANICALLY ATTACH RIGID INSULATION OVER WEATHER BARRIER ON PLYWOOD FRAMING. TEXTURE & FINISH TO MATCH CENTER. REPORT NO. E5R-382.
- F2. WEATHER BARRIER SHALL BE SYNTHETIC UNDERLAYMENT "TITANIUM" UDL 25 LB. COMPLY WITH MANUFACTURERS INSTALLATION GUIDELINES. CLASS A ASTM E-108. MEETS AND EXCEEDS ASTM D226 TYPES I & II. ICC CSA A220.1

GENERAL NOTES

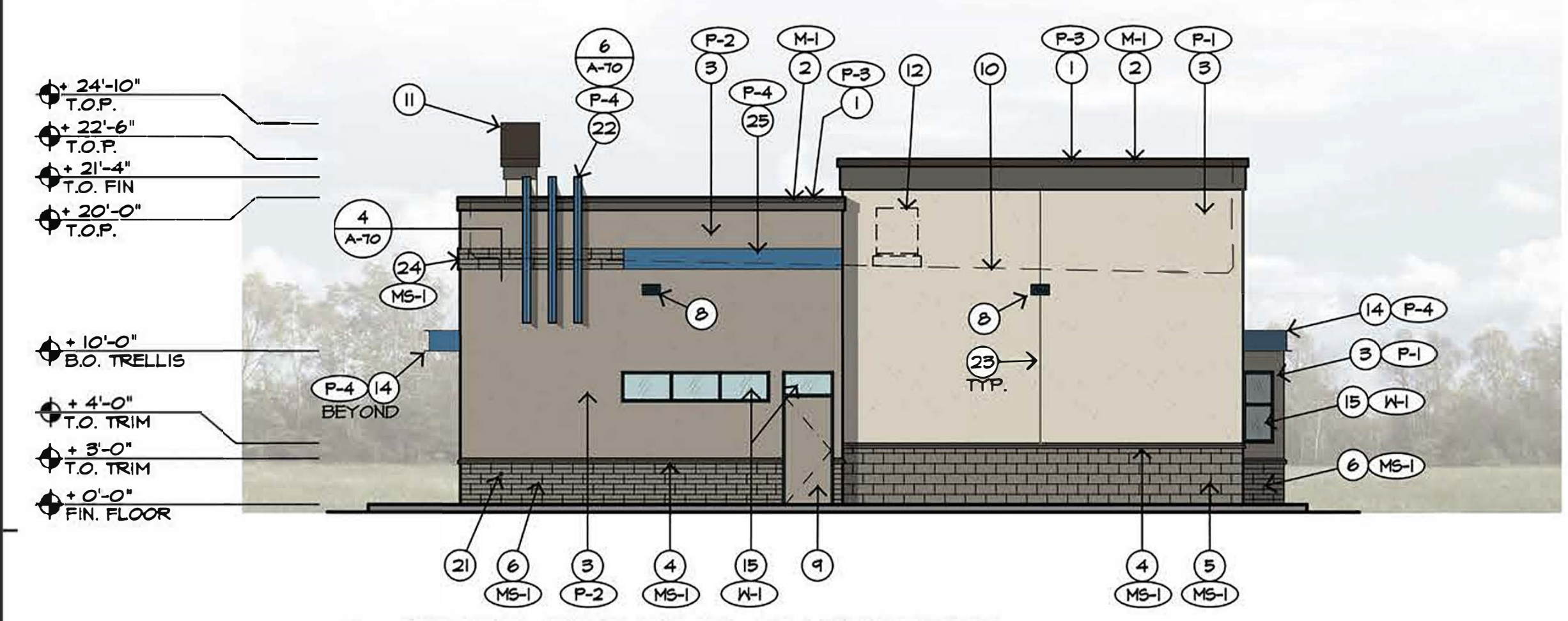
- A. ALL SIGNS SHALL BE PART OF A SEPARATE SUBMITTAL PROCESS, AND SEPARATE PERMIT APPROVAL PROCESS.
- B. SIGN CONTRACTOR SHALL PROVIDE OWNER WITH SIGN SHOP DRAWINGS FOR APPROVAL PRIOR TO FABRICATION OF ALL SIGNS, AND SUBMITTAL OF SIGN PERMIT.
- C. SIGN CONTRACTOR SHALL BE RESPONSIBLE FOR ALL SUBMITTALS AND PERMITTING OF OWNER APPROVED SIGN SHOP DWGS. PRIOR TO FABRICATION OF SIGNS.
- D. SIGN CONTRACTOR SHALL FIELD-VISIT THE SITE AND COORDINATE THE LOCATION OF ALL J-BOXES AND CONDUIT RUNS WITH THE S.C. DURING ELECTRICAL ROUGH-IN PHASE OF CONSTRUCTION.
- E. THE S.C. SHALL PROVIDE J-BOXES AND EMPTY CONDUIT WITH PULL-STRINGS TO SIGN U-BOX FROM POWER SOURCE. ALL FINAL WIRING AND SIGN INSTALLATION BY SIGN CONTRACTOR.
- F. STUCCO SHALL BE IN CONFORMANCE WITH ASTM C-926 REQUIREMENTS AND SPECIFICATIONS. TEXTURE TO MATCH EXISTING CENTER.
- G. FUEL CANOPY BRANDING / COLOR BY OTHERS, SHOWN FOR COORDINATION PURPOSES ONLY.

KEYNOTES

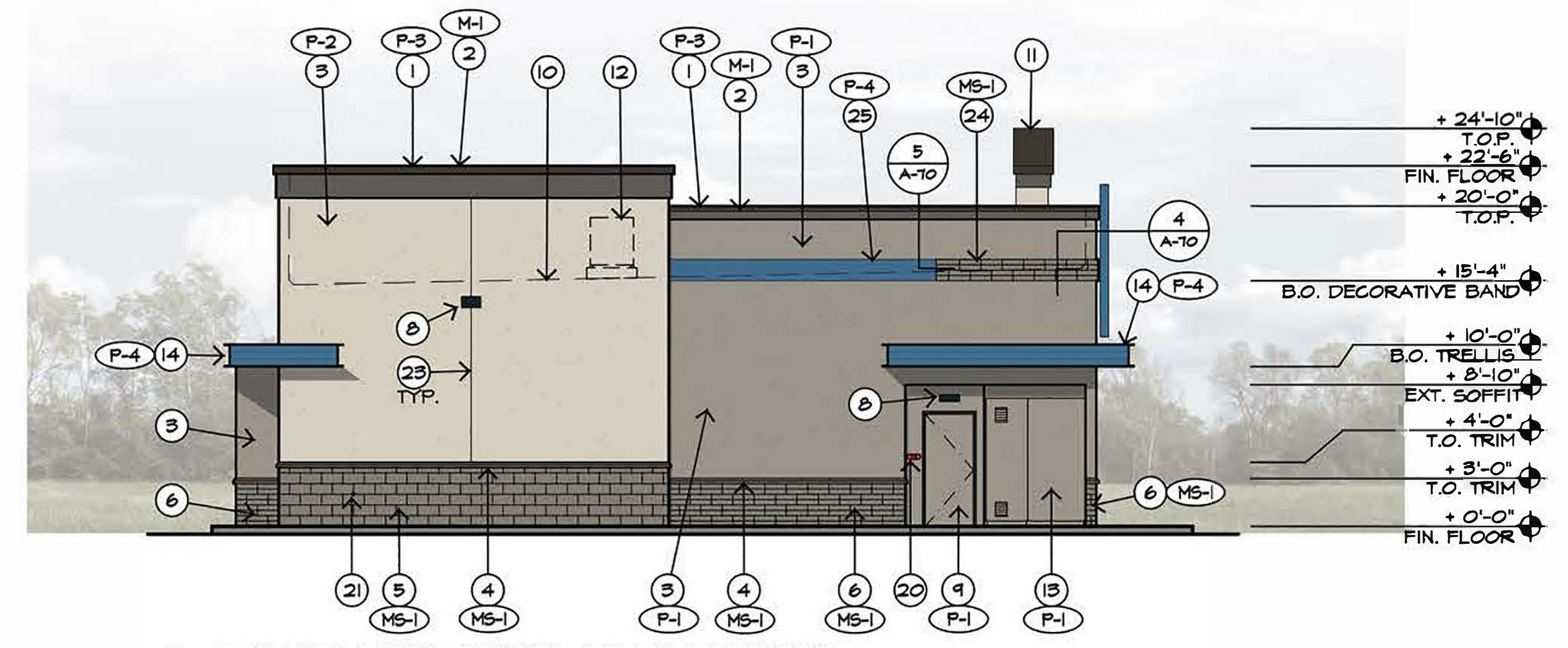
- 1. FOAM CORNICE W/ PAINTED STUCCO FINISH. SEE DETAILS.
- 2. CONT. PRE-FINISHED MTL. PARAPET CAP. SLOPE 1/8" PER FOOT.
- 3. STUCCO FINISH WITH SAND FINISH, PAINTED.
- 4. CONT. 4" STUCCO WAINSCOT BAND.
- 5. 2X8X16" SMOOTH FACE MASONRY VENEER WAINSCOT WITH STAINED FINISH, RUNNING BOND.
- 6. 2X4X16" SMOOTH FACE MASONRY VENEER WAINSCOT WITH STAINED FINISH, STACKED RUNNING BOND.
- 7. 4 1/2" ALUMINUM STOREFRONT WITH CENTERED WINDOW SYSTEM WITH INSULATED DUAL PANE GLAZING. PROVIDE TEMPERED GLASS WHERE REQUIRED. PROVIDE MIN. 10" HIGH BOTTOM RAILS AT ALL DOORWAYS.
- 8. EXTERIOR MOUNTED LIGHT FIXTURE. SEE ELECTRICAL.
- 9. EXTERIOR HOLLOW METAL DOOR AND FRAME. SEE DOOR SCHEDULE.
- 10. LINE OF ROOF BEYOND.
- 11. TOP OF PARAPET WALL BEYOND.
- 12. ROOF MOUNTED MECHANICAL EQUIPMENT BEYOND. SEE ROOF PLAN FOR FINAL LOCATION. SEE ROOF PLAN AND MECHANICAL DRAWINGS.
- 13. FREE STANDING EXTERIOR RATED SERVICE ENTRY SECTION CABINETS ATOP CONC. SLAB. PAINTED TO MATCH ADJACENT WALL.
- 14. STEEL CANOPY MOUNTED TO FACE OF BUILDING, PAINTED. SEE STRUCTURAL.
- 15. ALUMINUM FRAME WITH CENTERED WINDOW SYSTEM WITH INSULATED DUAL PANE GLAZING.
- 16. ALUMINUM FRAMED WINDOW EQUIPPED WITH FLUSH-MOUNT SINGLE SLIDING PANEL DRIVE UP WINDOW WITH SECURITY LOCKING SYSTEM. USE MODEL 55-4035E(LEFT) FROM QUICKSERV MANUFACTURE DARK BRONZE ANODIZED ALUMINUM FRAME WITH 5/8 OR 1" INSULATED GLAZING.
- 17. 12" HIGH SURFACE MOUNTED HALO ILLUMINATED ADDRESS NUMBERS. BLACK IN COLOR, CONTRASTING TO BLDG. COLOR ON DUSK UNTIL DAWN PHOTOCELL.
- 18. LOCATION OF BUILDING SIGNAGE. SEE SIGN PACKAGE. ALL SIGNAGE UNDER SEPARATE PERMIT.
- 19. ROOF DRAIN AND OVERFLOW OUTLETS WITH BRASS LAMBS TONGUE. PROVIDE RIFRAP AT EACH LOCATION.
- 20. LOCATION OF FIRE DEPARTMENT CONNECTION. SEE PLUMBING DRAWINGS.
- 21. LOCATION OF HOSE BIB. SEE PLUMBING DRAWINGS.
- 22. DECORATIVE METAL FIN ELEMENT W/ PAINTED FINISH. SEE DETAILS.
- 23. STUCCO REVEAL / CONTROL JOINT.
- 24. DECORATIVE 1'-4" HIGH BAND STARTING AT 15'-4" A.F.F. WITH STAINED MASONRY VENEER FINISH, SEE FINISH SCHEDULE. SEE DETAILS.
- 25. DECORATIVE 1'-4" HIGH BAND STARTING AT 15'-4" A.F.F. WITH PAINTED STUCCO FINISH, SEE FINISH SCHEDULE.
- 26. DECORATIVE COLUMN WITH 2X4X16" MASONRY VENEER FINISH. SEE FINISH SCHEDULE.



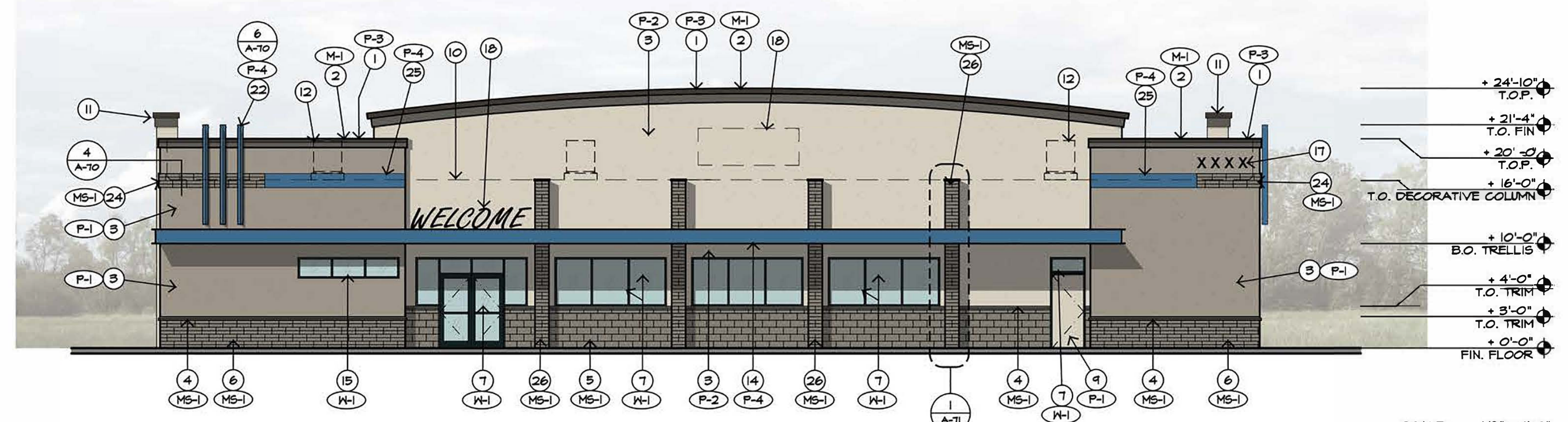
4 SOUTH BUILDING ELEVATION
SCALE: 1/8" = 1'-0"



3 WEST BUILDING ELEVATION
SCALE: 1/8" = 1'-0"



2 EAST BUILDING ELEVATION
SCALE: 1/8" = 1'-0"



1 NORTH BUILDING ELEVATION
SCALE: 1/8" = 1'-0"

PAINT & FINISH SCHEDULE

CODE	IDENTIFIER	BRAND/COLOR #	NAME
P-1	STUCCO BODY	DUNN EDWARDS DET620	BARNWOOD GRAY
P-2	STUCCO BODY	DUNN EDWARDS DECT13	HEATHER
P-3	EPIS TRIM	DUNN EDWARDS DET628	CHARCOAL SKETCH
P-4	STUCCO ACCENT	DUNN EDWARDS DE3052	RAINY LAKE
M-1	METAL ANNING	BERRIDGE	DARK BRONZE
MS-1	MASONRY STAIN	DUNN EDWARDS DET626	METAL FRINGE
M-1	STOREFRONT ALUMINUM	SOUTHWEST ALUM. AA-M12G22A31 / AAMA 611 ARCHITECTURAL / CLASS II	ANODIZED
TEMP	TEMPERED GLASS		

esencia
1743 E. McNair Drive, Suite 200
Tempe, Arizona 85283
t. 480 - 755 - 0959

Project Manager
ES
Drawn By
ES
Checked By
ES
Project Number
24059

GRAND FUEL STATION
S.C GRAND AVE & 85TH AVE
XXXX W. GRAND AVENUE
PEORIA, ARIZONA 85345

Revisions
Date 4-24-2025 Issued for APPROVAL

EXTERIOR BUILDING ELEVATIONS

A-30

Project Manager	ES
Drawn By	JW
Checked By	ES
Project Number	24059

This drawing is an instrument of service and the property of Esencia Design and shall remain their property. The use of this drawing shall be restricted to the original site for which it was prepared and publication thereof is expressly limited to such use. Reuse, reproduction, or publication in whole or in part is prohibited without their written consent.

GRAND FUEL STATION

**S.C GRAND AVE & 85TH AVE
XXXX W. GRAND AVENUE
PEORIA, ARIZONA 85345**

GENERAL NOTES

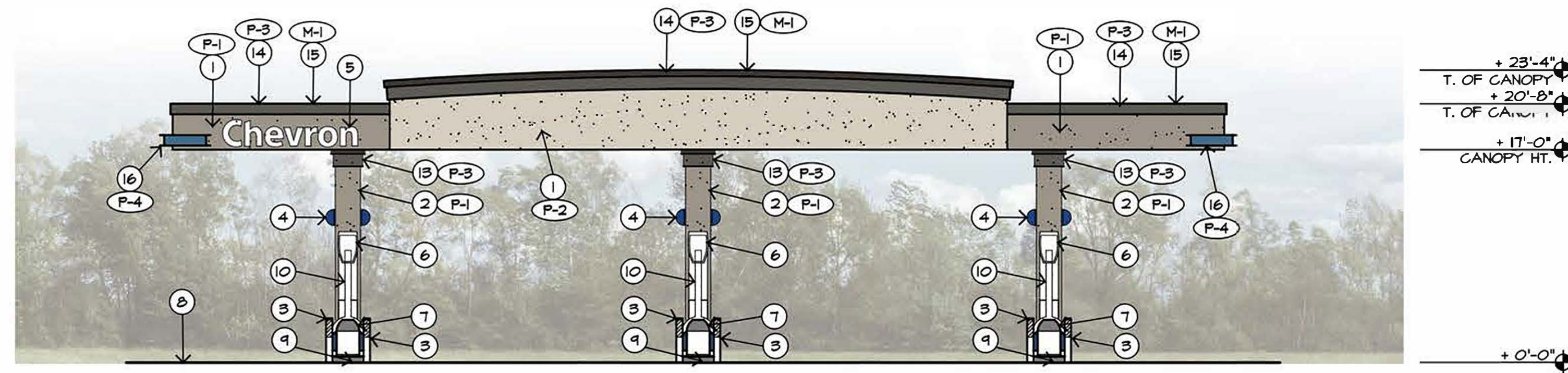
- A. ALL SIGNS SHALL BE PART OF A SEPARATE SUBMITTAL PROCESS, AND SEPARATE PERMIT APPROVAL PROCESS.
- B. SIGN CONTRACTOR SHALL PROVIDE OWNER WITH SIGN SHOP DRAWINGS FOR APPROVAL PRIOR TO FABRICATION OF ALL SIGNS, AND SUBMITTAL OF SIGN PERMIT.
- C. SIGN CONTRACTOR SHALL BE RESPONSIBLE FOR ALL SUBMITTALS AND PERMITTING OF OWNER APPROVED SIGN SHOP DRAWINGS. PRIOR TO FABRICATION OF SIGNS.
- D. SIGN CONTRACTOR SHALL FIELD-VISIT THE SITE AND COORDINATE THE LOCATION OF ALL U-BOXES AND CONDUIT RUNS WITH THE G.C. DURING ELECTRICAL ROUGH-IN PHASE OF CONSTRUCTION.
- E. THE G.C. SHALL PROVIDE U-BOXES AND EMPTY CONDUIT WITH PULL-STRING TO SIGN U-BOX FROM POWER SOURCE. ALL FINAL WIRING AND SIGN INSTALLATION BY SIGN CONTRACTOR.

PAINT & FINISH SCHEDULE

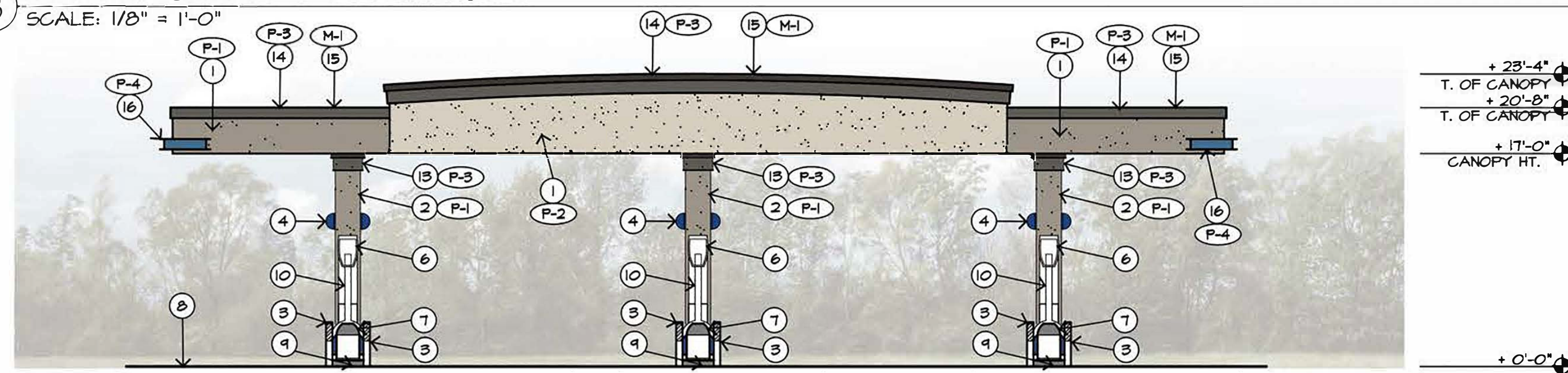
CODE	IDENTIFIER	BRAND/COLOR #	NAME
P-1	STUCCO BODY	DUNN EDWARDS DET620	BARNWOOD GRAY
P-2	STUCCO BODY	DUNN EDWARDS DECT13	HEATHER
P-3	EFIS TRIM	DUNN EDWARDS DET620	CHARCOAL SKETCH
P-4	STUCCO ACCENT	DUNN EDWARDS DE5052	RAINY LAKE
M-1	METAL AWNING	BERRIDGE	DARK BRONZE
MS-1	MASONRY STAIN	DUNN EDWARDS DET626	METAL FRINGE
M-1	STOREFRONT ALUMINUM	SOUTHWEST ALUM.	ANODIZED AA-M12C22A31 / AAMA 611 ARCHITECTURAL/ CLASS II
TEMP	TEMPERED GLASS		

KEYNOTES

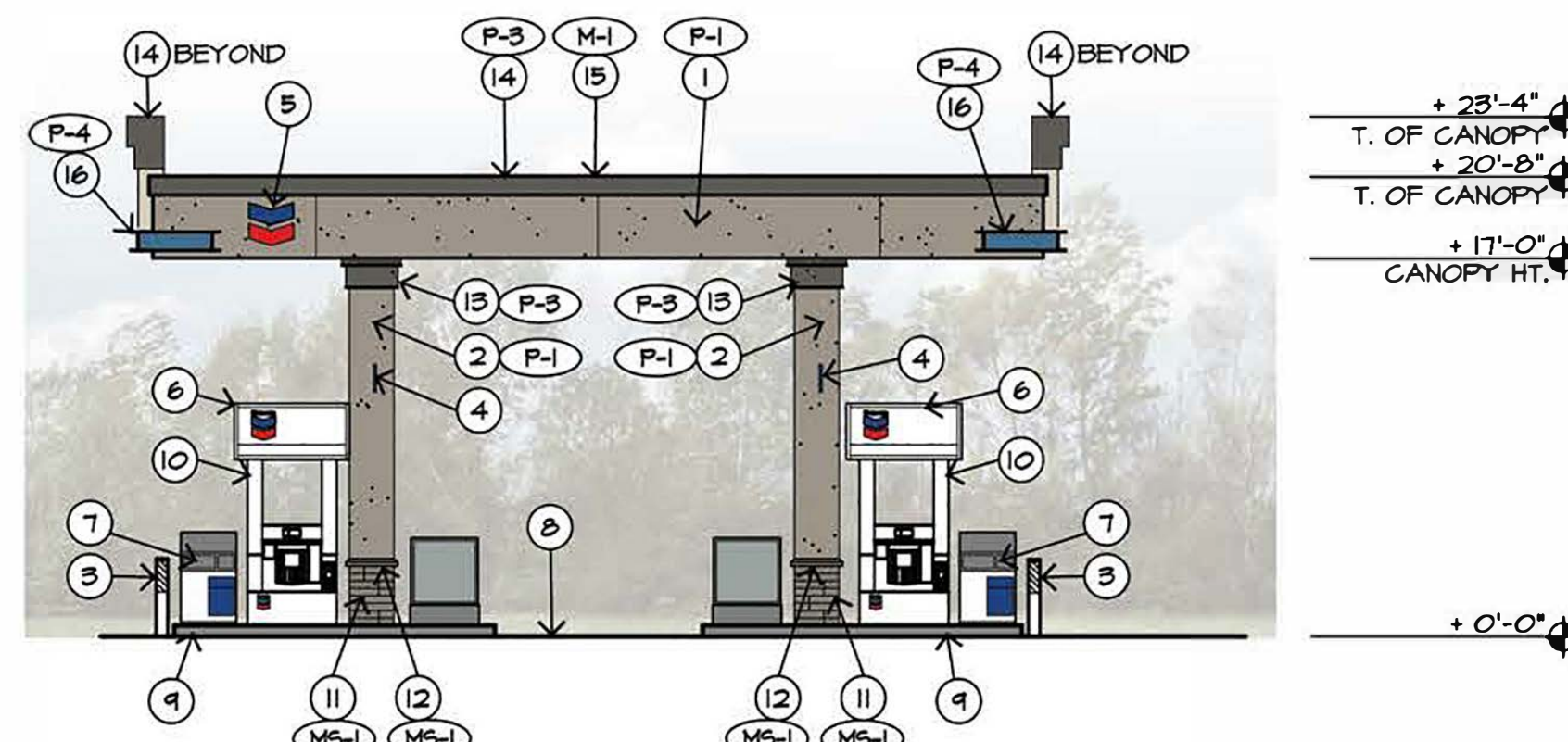
1. STUCCO FASCIA PER CHEVRON STANDARDS. SEE FINISH SCHEDULE.
2. STUCCO CANOPY COLUMN WITH PAINTED FINISH. SEE DETAILS.
3. 6" SQ. CONCRETE FILLED STEEL PIPE BOLLARD 42" HIGH. PAINTED.
4. DISPENSER IDENTIFICATION ON CANOPY COLUMN. SEE CHEVRON STANDARDS.
5. CANOPY SIGNAGE. PROVIDE ELECTRICAL AS REQUIRED.
6. ILLUMINATED DISPENSER SPANNER. SEE CHEVRON STANDARDS.
7. MISC. TRASH/VALET
8. CONCRETE CANOPY DRIVE SLAB. SEE CIVIL PLANS.
9. 4' WIDE CONCRETE ISLAND.
10. MULTI-PRODUCT FUEL DISPENSER. NOTE: HEIGHT OF ALL CONTROLS AND CARD READER SHALL BE 54" MAX. OR DISPENSER SHALL BE EQUIPPED WITH ALTERNATE A.D.A. COMPLIANT KEY PAD.
11. 2X4X16 SMOOTH FACE MASONRY VENEER WAINSCOT WITH STAINED FINISH. SEE FINISH SCHEDULE.
12. 4" HIGH STUCCO WAINSCOT CAP. SEE DETAILS.
13. STUCCO COLUMN CAP. SEE DETAILS.
14. FOAM CORNICE WITH PAINTED FINISH. SEE FINISH SCHEDULE. SEE DETAILS.
15. CONT. PRE-FINISHED METAL CAP. SLOPE MIN. 1/8" PER FOOT.
16. STEEL BEAM CORNER ACCENT. SEE DETAILS.



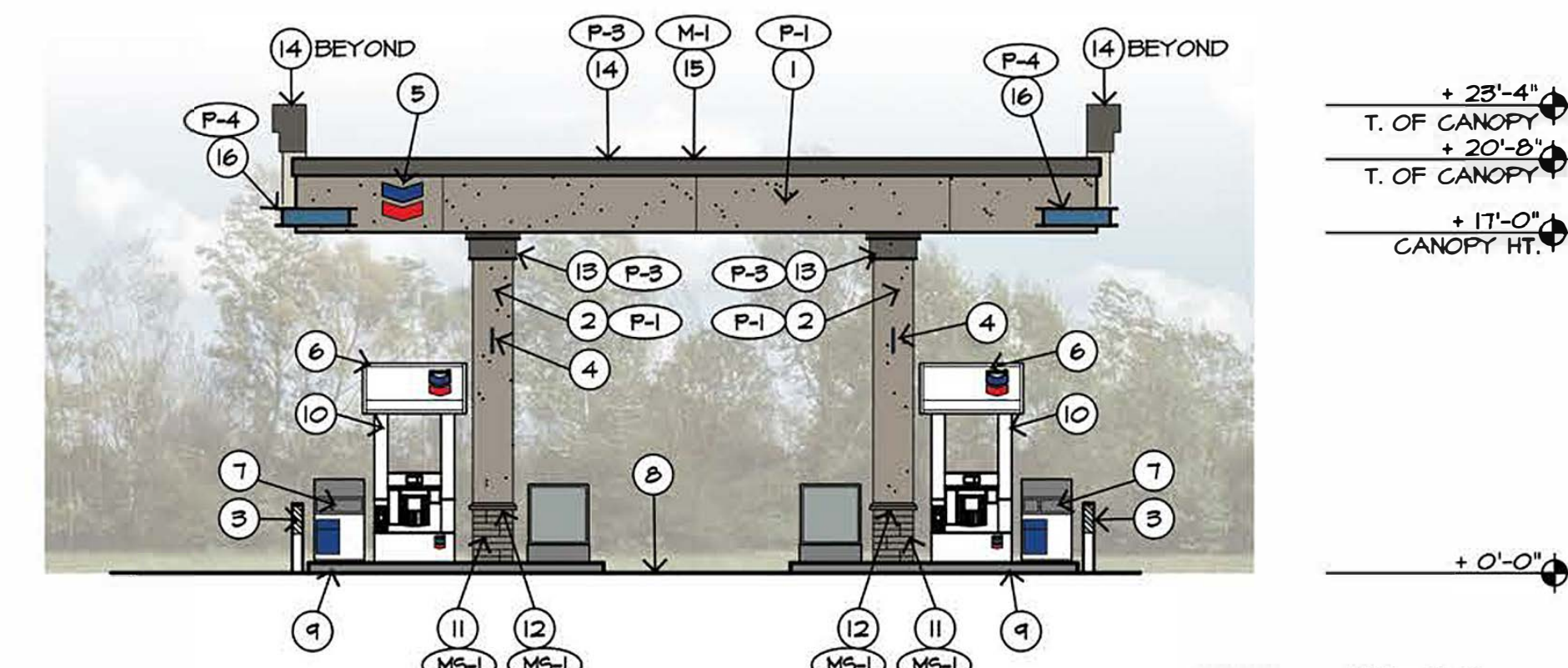
8 NORTH CANOPY ELEVATION
SCALE: 1/8" = 1'-0"



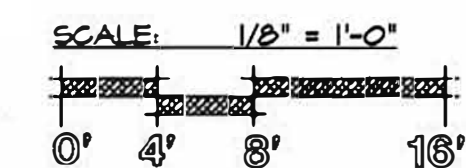
7 SOUTH CANOPY ELEVATION
SCALE: 1/8" = 1'-0"



6 EAST CANOPY ELEVATION
SCALE: 1/8" = 1'-0"



1 WEST CANOPY ELEVATION
SCALE: 1/8" = 1'-0"



Revisions	
Date	Issued for
4-24-2025	APPROVAL

AUTO CANOPY ELEVATIONS AND DETAILS

A-31