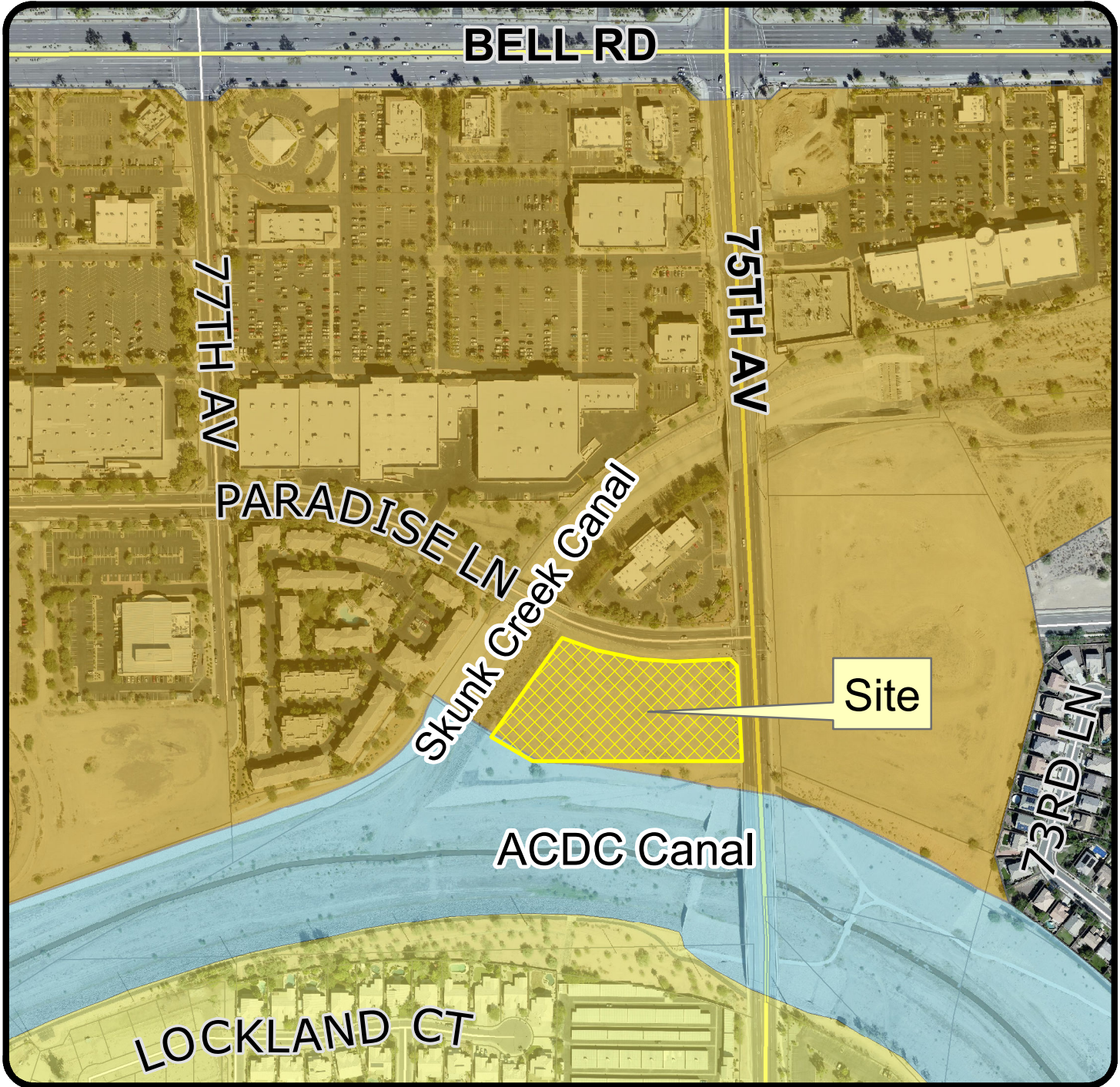


Land Use Map



Z06-15A.1 Marriott

Applicant: Amena Peoria LLC

Request: A rezoning request for a major Planned Area Development (PAD) amendment to allow a hotel use and associated development standards on the subject site.

Location: Southwest corner of 75th Avenue and Paradise Lane.

Legend

- Low Density Residential
- Sports Complex Mixed-Use
- Water

Exhibit B



Not to Scale