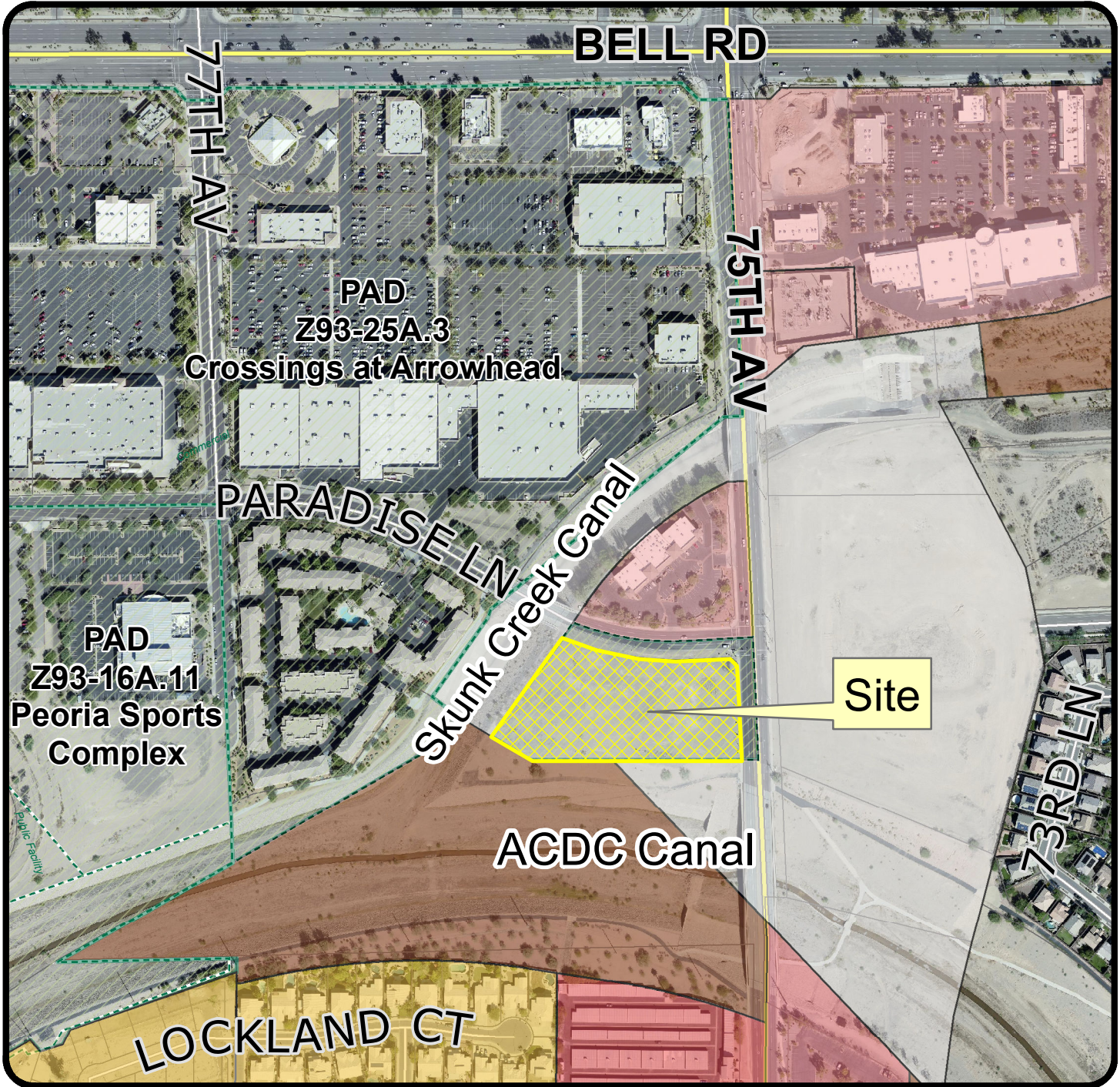


Zoning Map



Z06-15A.1 Marriott

Applicant: Amena Peoria LLC

Request: A rezoning request for a major Planned Area Development (PAD) amendment to allow a hotel use and associated development standards on the subject site.

Location: Southwest corner of 75th Avenue and Paradise Lane.

Legend

| | | | |
|--|------|--|------|
| | PAD | | RM-1 |
| | R1-8 | | C-3 |
| | C-2 | | PI-1 |
| | C-4 | | |

Exhibit C



Not to Scale